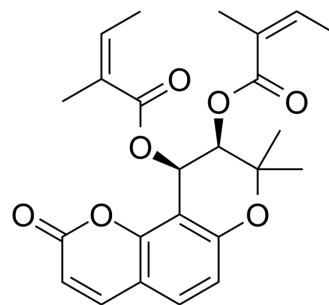


## (-)-Anomalin

Cat. No.:	HY-N0947
CAS No.:	4970-26-7
Molecular Formula:	C <sub>24</sub> H <sub>26</sub> O <sub>7</sub>
Molecular Weight:	426.46
Target:	Others
Pathway:	Others
Storage:	4°C, protect from light * In solvent : -80°C, 6 months; -20°C, 1 month (protect from light)



### SOLVENT & SOLUBILITY

In Vitro	DMSO : 100 mg/mL (234.49 mM; Need ultrasonic)						
	Preparing Stock Solutions	Solvent Concentration	Mass	1 mg	5 mg	10 mg	
				1 mM	2.3449 mL	11.7244 mL	23.4489 mL
				5 mM	0.4690 mL	2.3449 mL	4.6898 mL
				10 mM	0.2345 mL	1.1724 mL	2.3449 mL
Please refer to the solubility information to select the appropriate solvent.							
In Vivo	1. Add each solvent one by one: 10% DMSO >> 40% PEG300 >> 5% Tween-80 >> 45% saline Solubility: ≥ 2.5 mg/mL (5.86 mM); Clear solution						
	2. Add each solvent one by one: 10% DMSO >> 90% (20% SBE-β-CD in saline) Solubility: 2.5 mg/mL (5.86 mM); Suspended solution; Need ultrasonic						
	3. Add each solvent one by one: 10% DMSO >> 90% corn oil Solubility: ≥ 2.5 mg/mL (5.86 mM); Clear solution						

### BIOLOGICAL ACTIVITY

Description	(-)-Anomalin ((-)-Praeruptorin B) is a coumarin derivative isolated from the root of <i>Angelica anomala</i> <sup>[1]</sup> .
-------------	---

### REFERENCES

[1]. Alev Tosun, et al. Determination of Anomalin and Deltoin in *Seseli resinosum* by LC Combined with Chemometric Methods. Published: 21 September 2007

---

**Caution: Product has not been fully validated for medical applications. For research use only.**

Tel: 609-228-6898

Fax: 609-228-5909

E-mail: [tech@MedChemExpress.com](mailto:tech@MedChemExpress.com)

Address: 1 Deer Park Dr, Suite Q, Monmouth Junction, NJ 08852, USA