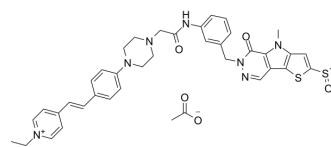


## ZY-2

<b>Cat. No.:</b>	HY-D1876
<b>Molecular Formula:</b>	C <sub>40</sub> H <sub>43</sub> N <sub>7</sub> O <sub>5</sub> S <sub>2</sub>
<b>Molecular Weight:</b>	765.94
<b>Target:</b>	Fluorescent Dye
<b>Pathway:</b>	Others
<b>Storage:</b>	4°C, sealed storage, away from moisture and light * In solvent : -80°C, 6 months; -20°C, 1 month (sealed storage, away from moisture and light)



### SOLVENT & SOLUBILITY

#### In Vitro

DMSO : 100 mg/mL (130.56 mM; Need ultrasonic)

Solvent	Mass	Concentration		
		1 mg	5 mg	10 mg
Preparing Stock Solutions	1 mM	1.3056 mL	6.5279 mL	13.0559 mL
	5 mM	0.2611 mL	1.3056 mL	2.6112 mL
	10 mM	0.1306 mL	0.6528 mL	1.3056 mL

Please refer to the solubility information to select the appropriate solvent.

### BIOLOGICAL ACTIVITY

#### Description

ZY-2 is a specific fluorescent probe for pyruvate kinase M2 (PKM2). ZY-2 can image in PKM2-positive cells in a time- and concentration-dependent manner. ZY-2 can be used for the detection of cancer cells<sup>[1]</sup>.

### REFERENCES

[1]. Zhang Y, et al. A responsive fluorescent probe for detecting and imaging pyruvate kinase M2 in live cells. Chem Commun (Camb). 2022, 58(45): 6494-6497.

**Caution: Product has not been fully validated for medical applications. For research use only.**

Tel: 609-228-6898

Fax: 609-228-5909

E-mail: tech@MedChemExpress.com

Address: 1 Deer Park Dr, Suite Q, Monmouth Junction, NJ 08852, USA