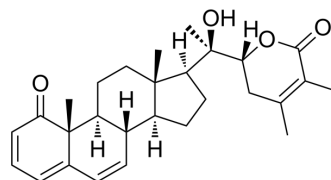


Withasomniferolide B

Cat. No.:	HY-N10887
CAS No.:	2365386-75-8
Molecular Formula:	C ₂₈ H ₃₆ O ₄
Molecular Weight:	436.58
Target:	GABA Receptor
Pathway:	Membrane Transporter/Ion Channel; Neuronal Signaling
Storage:	Please store the product under the recommended conditions in the Certificate of Analysis.



BIOLOGICAL ACTIVITY

Description

Withasomniferolide B is a withanolide. Withasomniferolide B can be isolated from a GABA_A receptor positive activator methanol extract of the roots of *Withania somnifera*^[1].

REFERENCES

[1]. Vijay P Sonar, et al. Ferulic Acid Esters and Withanolides: In Search of *Withania somnifera* GABA_A Receptor Modulators. *J Nat Prod.* 2019 May 24;82(5):1250-1257.

Caution: Product has not been fully validated for medical applications. For research use only.

Tel: 609-228-6898

Fax: 609-228-5909

E-mail: tech@MedChemExpress.com

Address: 1 Deer Park Dr, Suite Q, Monmouth Junction, NJ 08852, USA