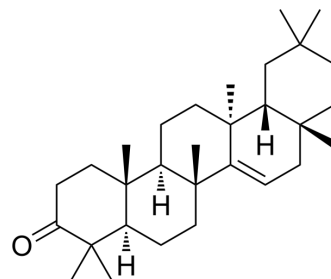


Taraxerone

Cat. No.:	HY-N1177
CAS No.:	514-07-8
Molecular Formula:	C ₃₀ H ₄₈ O
Molecular Weight:	424.7
Target:	Aldehyde Dehydrogenase (ALDH)
Pathway:	Metabolic Enzyme/Protease
Storage:	4°C, sealed storage, away from moisture and light * In solvent : -80°C, 6 months; -20°C, 1 month (sealed storage, away from moisture and light)



SOLVENT & SOLUBILITY

In Vitro

THF : 10 mg/mL (23.55 mM; Need ultrasonic)
DMSO : < 1 mg/mL (ultrasonic;warming;heat to 60°C) (insoluble or slightly soluble)

	Solvent Concentration	Mass		
		1 mg	5 mg	10 mg
Preparing Stock Solutions	1 mM	2.3546 mL	11.7730 mL	23.5460 mL
	5 mM	0.4709 mL	2.3546 mL	4.7092 mL
	10 mM	0.2355 mL	1.1773 mL	2.3546 mL

Please refer to the solubility information to select the appropriate solvent.

BIOLOGICAL ACTIVITY

Description

Taraxerone is isolated from *Sedum sarmentosum*. Taraxerone enhances effects on alcohol dehydrogenase (ADH) and acetaldehyde dehydrogenase (ALDH) activities with EC₅₀ values of 512.42 and 500.16 μM, respectively^[1].

IC₅₀ & Target

EC₅₀: 512.42 μM (ADH); 500.16 μM (ALDH)^[1]

In Vivo

Taraxerone significantly lowers the plasma alcohol and acetaldehyde concentrations in mice. Compare to the control group, the ADH and ALDH expressions in the liver tissues are abruptly increased in the taraxerone-treated groups after ethanol exposure^[1].

Taraxerone prevents catalase, superoxide dismutase, and reduces glutathione concentrations from the decrease induced by ethanol administration^[1].

MCE has not independently confirmed the accuracy of these methods. They are for reference only.

REFERENCES

[1]. Sung CK, et al. Taraxerone enhances alcohol oxidation via increases of alcohol dehydrogenase (ADH) and acetaldehyde dehydrogenase (ALDH) activities and gene expressions. Food Chem Toxicol. 2012 Jul;50(7):2508-14.

Caution: Product has not been fully validated for medical applications. For research use only.

Tel: 609-228-6898

Fax: 609-228-5909

E-mail: tech@MedChemExpress.com

Address: 1 Deer Park Dr, Suite Q, Monmouth Junction, NJ 08852, USA