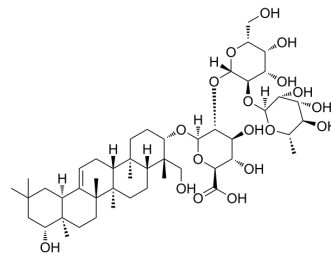


Soyasaponin Bb

Cat. No.:	HY-N0310
CAS No.:	51330-27-9
Molecular Formula:	C ₄₈ H ₇₈ O ₁₈
Molecular Weight:	943.12
Target:	Aldose Reductase
Pathway:	Metabolic Enzyme/Protease
Storage:	4°C, sealed storage, away from moisture and light * In solvent : -80°C, 6 months; -20°C, 1 month (sealed storage, away from moisture and light)



SOLVENT & SOLUBILITY

In Vitro	DMSO : 100 mg/mL (106.03 mM; Need ultrasonic)																					
	<table border="1"> <thead> <tr> <th rowspan="2">Solvent</th> <th rowspan="2">Mass</th> <th colspan="3">Concentration</th> </tr> <tr> <th>1 mg</th> <th>5 mg</th> <th>10 mg</th> </tr> </thead> <tbody> <tr> <td rowspan="3">Preparing Stock Solutions</td> <td>1 mM</td> <td>1.0603 mL</td> <td>5.3016 mL</td> <td>10.6031 mL</td> </tr> <tr> <td>5 mM</td> <td>0.2121 mL</td> <td>1.0603 mL</td> <td>2.1206 mL</td> </tr> <tr> <td>10 mM</td> <td>0.1060 mL</td> <td>0.5302 mL</td> <td>1.0603 mL</td> </tr> </tbody> </table>	Solvent	Mass	Concentration			1 mg	5 mg	10 mg	Preparing Stock Solutions	1 mM	1.0603 mL	5.3016 mL	10.6031 mL	5 mM	0.2121 mL	1.0603 mL	2.1206 mL	10 mM	0.1060 mL	0.5302 mL	1.0603 mL
Solvent	Mass			Concentration																		
		1 mg	5 mg	10 mg																		
Preparing Stock Solutions	1 mM	1.0603 mL	5.3016 mL	10.6031 mL																		
	5 mM	0.2121 mL	1.0603 mL	2.1206 mL																		
	10 mM	0.1060 mL	0.5302 mL	1.0603 mL																		
	Please refer to the solubility information to select the appropriate solvent.																					
In Vivo	1. Add each solvent one by one: 10% DMSO >> 90% corn oil Solubility: ≥ 2.5 mg/mL (2.65 mM); Clear solution																					

BIOLOGICAL ACTIVITY

Description	soyasaponin Bb is a soyasaponin isolated from <i>Phaseolus vulgaris</i> , acting as an aldose reductase differential inhibitor (ARDI) [1].
--------------------	--

CUSTOMER VALIDATION

- Food Chem. 2023 Jun 5, 136548.

See more customer validations on www.MedChemExpress.com

REFERENCES

Caution: Product has not been fully validated for medical applications. For research use only.

Tel: 609-228-6898

Fax: 609-228-5909

E-mail: tech@MedChemExpress.com

Address: 1 Deer Park Dr, Suite Q, Monmouth Junction, NJ 08852, USA