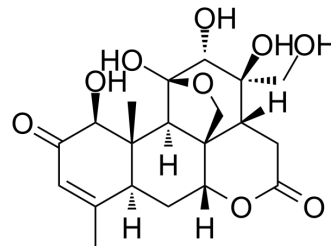


## Shinjulactone M

Cat. No.:	HY-N10368
CAS No.:	103630-27-9
Molecular Formula:	C <sub>20</sub> H <sub>26</sub> O <sub>9</sub>
Molecular Weight:	410.42
Target:	Parasite
Pathway:	Anti-infection
Storage:	Please store the product under the recommended conditions in the Certificate of Analysis.



### BIOLOGICAL ACTIVITY

Description	Shinjulactone M is a quassinoid isolated from various parts of Ailanthus species. Ailanthus, an important genus of the Simaroubaceae family, can be used as a febrifuge (antimalarial) and anthelmintic, and is given for the research of chronic bronchitis, epilepsy and asthma <sup>[1]</sup> .
IC <sub>50</sub> & Target	Plasmodium

### REFERENCES

[1]. Bipin Chandra Joshi, et al. Ailanthus Quassinoids and Their Biological Activity.

**Caution: Product has not been fully validated for medical applications. For research use only.**

Tel: 609-228-6898

Fax: 609-228-5909

E-mail: tech@MedChemExpress.com

Address: 1 Deer Park Dr, Suite Q, Monmouth Junction, NJ 08852, USA