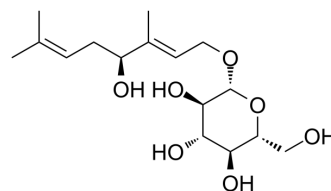


## Rosiridin

Cat. No.:	HY-N0505
CAS No.:	100462-37-1
Molecular Formula:	C <sub>16</sub> H <sub>28</sub> O <sub>7</sub>
Molecular Weight:	332.39
Target:	Monoamine Oxidase
Pathway:	Neuronal Signaling
Storage:	Please store the product under the recommended conditions in the Certificate of Analysis.



### BIOLOGICAL ACTIVITY

Description	Rosiridin inhibits MAO A and MAO B with potential beneficial effect in depression and senile dementia. Rosiridin shows an inhibition of 83.8% against MAO B at 10 $\mu$ M ( $pIC_{50}$ =5.38) <sup>[1]</sup> .
IC <sub>50</sub> & Target	$pIC_{50}$ : 5.38 (MAO B) <sup>[1]</sup>
In Vitro	Rosiridin presents an inhibition 16.2 $\pm$ 2.3 and 83.8 $\pm$ 1.1% on MAO A and MAO B at a concentration of 10 $\mu$ M <sup>[1]</sup> . MCE has not independently confirmed the accuracy of these methods. They are for reference only.

### REFERENCES

[1]. van Diermen D, et al. Monoamine oxidase inhibition by *Rhodiola rosea* L. roots. *J Ethnopharmacol.* 2009 Mar 18;122(2):397-401.

**Caution: Product has not been fully validated for medical applications. For research use only.**

Tel: 609-228-6898

Fax: 609-228-5909

E-mail: tech@MedChemExpress.com

Address: 1 Deer Park Dr, Suite Q, Monmouth Junction, NJ 08852, USA