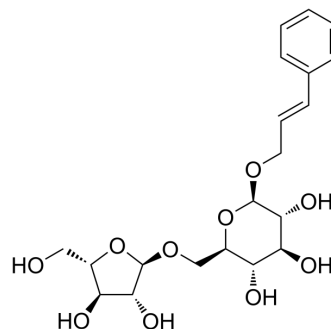


Rosarin

Cat. No.:	HY-N0506
CAS No.:	84954-93-8
Molecular Formula:	C ₂₀ H ₂₈ O ₁₀
Molecular Weight:	428.43
Target:	Interleukin Related
Pathway:	Immunology/Inflammation
Storage:	-20°C, protect from light * In solvent : -80°C, 6 months; -20°C, 1 month (protect from light)



SOLVENT & SOLUBILITY

In Vitro	DMSO : 100 mg/mL (233.41 mM; Need ultrasonic)				
		Solvent Concentration	Mass 1 mg	5 mg	10 mg
	Preparing Stock Solutions	1 mM	2.3341 mL	11.6705 mL	23.3410 mL
		5 mM	0.4668 mL	2.3341 mL	4.6682 mL
		10 mM	0.2334 mL	1.1671 mL	2.3341 mL
Please refer to the solubility information to select the appropriate solvent.					
In Vivo	<ol style="list-style-type: none"> Add each solvent one by one: 10% DMSO >> 40% PEG300 >> 5% Tween-80 >> 45% saline Solubility: ≥ 2.5 mg/mL (5.84 mM); Clear solution Add each solvent one by one: 10% DMSO >> 90% (20% SBE-β-CD in saline) Solubility: ≥ 2.5 mg/mL (5.84 mM); Clear solution Add each solvent one by one: 10% DMSO >> 90% corn oil Solubility: ≥ 2.5 mg/mL (5.84 mM); Clear solution 				

BIOLOGICAL ACTIVITY

Description	Rosarin is a cinnamyl alcohol glycoside isolated from <i>Rhodiola rosea</i> . Rosarin has anti-inflammatory and neuroprotective effects. Rosarin suppresses the expression of the proinflammatory factors iNOS, IL-1β, and TNF-α in the kidney and prefrontal cortex of brain in mice ^[1] .
IC ₅₀ & Target	IL-1
In Vitro	Rosarin (0-50 μg/ml; 18 hours) pretreats 30 mins in LPS-induced BV-2 cells suppresses iNOS and cytokines expression in a concentration-dependent manner in the murine BV2 cells ^[1] . MCE has not independently confirmed the accuracy of these methods. They are for reference only.

REFERENCES

[1]. Lee Y, et al. Anti-Inflammatory and Neuroprotective Effects of Constituents Isolated from *Rhodiola rosea*. *Evid Based Complement Alternat Med*. 2013;2013:514049.

Caution: Product has not been fully validated for medical applications. For research use only.

Tel: 609-228-6898

Fax: 609-228-5909

E-mail: tech@MedChemExpress.com

Address: 1 Deer Park Dr, Suite Q, Monmouth Junction, NJ 08852, USA