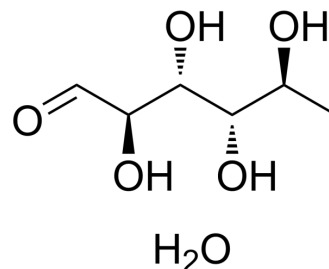


## Rhamnose monohydrate

<b>Cat. No.:</b>	HY-N1420A		
<b>CAS No.:</b>	10030-85-0		
<b>Molecular Formula:</b>	C <sub>6</sub> H <sub>14</sub> O <sub>6</sub>		
<b>Molecular Weight:</b>	182.17		
<b>Target:</b>	Endogenous Metabolite		
<b>Pathway:</b>	Metabolic Enzyme/Protease		
<b>Storage:</b>	Powder	-20°C	3 years
		4°C	2 years
	In solvent	-80°C	2 years
		-20°C	1 year



### SOLVENT & SOLUBILITY

<b>In Vitro</b>	DMSO : 100 mg/mL (548.94 mM; Need ultrasonic)				
		Solvent Concentration	Mass 1 mg	5 mg	10 mg
	<b>Preparing Stock Solutions</b>	1 mM	5.4894 mL	27.4469 mL	54.8938 mL
		5 mM	1.0979 mL	5.4894 mL	10.9788 mL
10 mM		0.5489 mL	2.7447 mL	5.4894 mL	
Please refer to the solubility information to select the appropriate solvent.					
<b>In Vivo</b>	1. Add each solvent one by one: 10% DMSO >> 40% PEG300 >> 5% Tween-80 >> 45% saline Solubility: ≥ 2.5 mg/mL (13.72 mM); Clear solution  2. Add each solvent one by one: 10% DMSO >> 90% (20% SBE-β-CD in saline) Solubility: ≥ 2.5 mg/mL (13.72 mM); Clear solution				

### BIOLOGICAL ACTIVITY

<b>Description</b>	Rhamnose monohydrate (L-Rhamnose monohydrate) is a monosaccharide found in plants and bacteria. Rhamnose monohydrate-conjugated immunogens is used in immunotherapies <sup>[1]</sup> . Rhamnose monohydrate crosses the epithelia via the transcellular pathway and acts as a marker of intestinal absorption <sup>[2]</sup> .
<b>IC<sub>50</sub> &amp; Target</b>	Microbial Metabolite

### REFERENCES

---

[1]. Chen W, et al. L-rhamnose antigen: a promising alternative to  $\alpha$ -gal for cancer immunotherapies. ACS Chem Biol. 2011 Feb 18;6(2):185-91.

[2]. Zuhl MN, et al. Effects of oral glutamine supplementation on exercise-induced gastrointestinal permeability and tight junction protein expression. J Appl Physiol (1985). 2014 Jan 15;116(2):183-91.

---

**Caution: Product has not been fully validated for medical applications. For research use only.**

Tel: 609-228-6898

Fax: 609-228-5909

E-mail: [tech@MedChemExpress.com](mailto:tech@MedChemExpress.com)

Address: 1 Deer Park Dr, Suite Q, Monmouth Junction, NJ 08852, USA