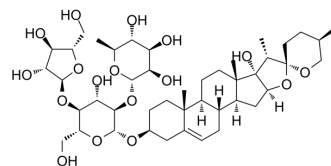


## Polyphyllin H

Cat. No.:	HY-N2382		
CAS No.:	81917-50-2		
Molecular Formula:	C <sub>44</sub> H <sub>70</sub> O <sub>17</sub>		
Molecular Weight:	871.02		
Target:	Others		
Pathway:	Others		
Storage:	Powder	-20°C	3 years
		4°C	2 years
	In solvent	-80°C	6 months
		-20°C	1 month



### SOLVENT & SOLUBILITY

#### In Vitro

DMSO : ≥ 100 mg/mL (114.81 mM)  
 \* "≥" means soluble, but saturation unknown.

	Solvent Concentration	Mass		
		1 mg	5 mg	10 mg
Preparing Stock Solutions	1 mM	1.1481 mL	5.7404 mL	11.4808 mL
	5 mM	0.2296 mL	1.1481 mL	2.2962 mL
	10 mM	0.1148 mL	0.5740 mL	1.1481 mL

Please refer to the solubility information to select the appropriate solvent.

#### In Vivo

- Add each solvent one by one: 10% DMSO >> 40% PEG300 >> 5% Tween-80 >> 45% saline  
Solubility: 2.5 mg/mL (2.87 mM); Suspended solution; Need ultrasonic
- Add each solvent one by one: 10% DMSO >> 90% (20% SBE-β-CD in saline)  
Solubility: ≥ 2.5 mg/mL (2.87 mM); Clear solution
- Add each solvent one by one: 10% DMSO >> 90% corn oil  
Solubility: ≥ 2.5 mg/mL (2.87 mM); Clear solution

### BIOLOGICAL ACTIVITY

#### Description

Polyphyllin H has been widely used in traditional Chinese medicinal preparations to treat inflammation, fracture and convulsion<sup>[1]</sup>.

### REFERENCES

**Caution: Product has not been fully validated for medical applications. For research use only.**

Tel: 609-228-6898

Fax: 609-228-5909

E-mail: [tech@MedChemExpress.com](mailto:tech@MedChemExpress.com)

Address: 1 Deer Park Dr, Suite Q, Monmouth Junction, NJ 08852, USA