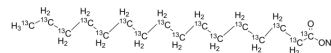


## Palmitic acid-<sup>13</sup>C<sub>16</sub> sodium

<b>Cat. No.:</b>	HY-N0830BS1
<b>CAS No.:</b>	2483736-17-8
<b>Molecular Formula:</b>	<sup>13</sup> C <sub>16</sub> H <sub>31</sub> NaO <sub>2</sub>
<b>Molecular Weight:</b>	294.29
<b>Target:</b>	HSP; Isotope-Labeled Compounds
<b>Pathway:</b>	Cell Cycle/DNA Damage; Metabolic Enzyme/Protease; Others
<b>Storage:</b>	4°C, protect from light, stored under nitrogen * In solvent : -80°C, 6 months; -20°C, 1 month (protect from light, stored under nitrogen)



### SOLVENT & SOLUBILITY

#### In Vitro

DMSO : 11.11 mg/mL (37.75 mM; ultrasonic and warming and adjust pH to 4 with HCl and heat to 60°C)  
 DMSO : 11.11 mg/mL (37.75 mM; ultrasonic and warming and adjust pH to 4 with HCl and heat to 60°C)  
 H<sub>2</sub>O : 0.1 mg/mL (0.34 mM; ultrasonic and warming and heat to 44°C)  
 H<sub>2</sub>O : 0.1 mg/mL (0.34 mM; ultrasonic and warming and heat to 44°C)

	Solvent Concentration	Mass		
		1 mg	5 mg	10 mg
Preparing Stock Solutions	1 mM	3.3980 mL	16.9900 mL	33.9801 mL
	5 mM	0.6796 mL	3.3980 mL	6.7960 mL
	10 mM	0.3398 mL	1.6990 mL	3.3980 mL

Please refer to the solubility information to select the appropriate solvent.

### BIOLOGICAL ACTIVITY

#### Description

Palmitic acid-<sup>13</sup>C<sub>16</sub> (sodium) is the <sup>13</sup>C-labeled Palmitic acid sodium. Palmitic acid sodium is a long-chain saturated fatty acid commonly found in both animals and plants. Palmitic acid sodium can induce the expression of glucose-regulated protein 78 (GRP78) and CCAAT/enhancer binding protein homologous protein (CHOP) in in mouse granulosa cells[1][2].

### REFERENCES

- [1]. Russak EM, et al. Impact of Deuterium Substitution on the Pharmacokinetics of Pharmaceuticals. *Ann Pharmacother.* 2019;53(2):211-216.
- [2]. Harada H, et al. Antitumor activity of palmitic acid found as a selective cytotoxic substance in a marine red alga. *Anticancer Res.* 2002 Sep-Oct;22(5):2587-90.

---

**Caution: Product has not been fully validated for medical applications. For research use only.**

Tel: 609-228-6898

Fax: 609-228-5909

E-mail: [tech@MedChemExpress.com](mailto:tech@MedChemExpress.com)

Address: 1 Deer Park Dr, Suite Q, Monmouth Junction, NJ 08852, USA