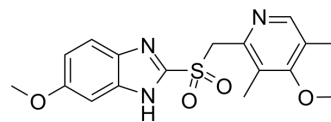


Omeprazole sulfone

Cat. No.:	HY-G0007		
CAS No.:	88546-55-8		
Molecular Formula:	C ₁₇ H ₁₉ N ₃ O ₄ S		
Molecular Weight:	361.42		
Target:	Drug Metabolite		
Pathway:	Metabolic Enzyme/Protease		
Storage:	Powder	-20°C	3 years
		4°C	2 years
	In solvent	-80°C	6 months
		-20°C	1 month



SOLVENT & SOLUBILITY

In Vitro

DMSO : 250 mg/mL (691.72 mM; Need ultrasonic)

Preparing Stock Solutions	Solvent Concentration	Mass		
		1 mg	5 mg	10 mg
	1 mM	2.7669 mL	13.8343 mL	27.6686 mL
	5 mM	0.5534 mL	2.7669 mL	5.5337 mL
	10 mM	0.2767 mL	1.3834 mL	2.7669 mL

Please refer to the solubility information to select the appropriate solvent.

In Vivo

- Add each solvent one by one: 10% DMSO >> 40% PEG300 >> 5% Tween-80 >> 45% saline
Solubility: ≥ 2.08 mg/mL (5.76 mM); Clear solution
- Add each solvent one by one: 10% DMSO >> 90% (20% SBE-β-CD in saline)
Solubility: ≥ 2.08 mg/mL (5.76 mM); Clear solution

BIOLOGICAL ACTIVITY

Description

Omeprazole sulfone is a metabolite of Omeprazole, which is a proton pump inhibitor.

Caution: Product has not been fully validated for medical applications. For research use only.

Tel: 609-228-6898

Fax: 609-228-5909

E-mail: tech@MedChemExpress.com

Address: 1 Deer Park Dr, Suite Q, Monmouth Junction, NJ 08852, USA