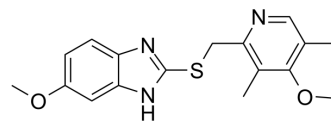


## Omeprazole sulfide

Cat. No.:	HY-G0006		
CAS No.:	73590-85-9		
Molecular Formula:	C <sub>17</sub> H <sub>19</sub> N <sub>3</sub> O <sub>2</sub> S		
Molecular Weight:	329.42		
Target:	Drug Metabolite		
Pathway:	Metabolic Enzyme/Protease		
Storage:	Powder	-20°C	3 years
		4°C	2 years
	In solvent	-80°C	2 years
		-20°C	1 year



### SOLVENT & SOLUBILITY

#### In Vitro

DMSO : 100 mg/mL (303.56 mM; Need ultrasonic)

Concentration	Solvent	Mass		
		1 mg	5 mg	10 mg
Preparing Stock Solutions	1 mM	3.0356 mL	15.1782 mL	30.3564 mL
	5 mM	0.6071 mL	3.0356 mL	6.0713 mL
	10 mM	0.3036 mL	1.5178 mL	3.0356 mL

Please refer to the solubility information to select the appropriate solvent.

#### In Vivo

- Add each solvent one by one: 10% DMSO >> 40% PEG300 >> 5% Tween-80 >> 45% saline  
Solubility: ≥ 2.5 mg/mL (7.59 mM); Clear solution
- Add each solvent one by one: 10% DMSO >> 90% (20% SBE-β-CD in saline)  
Solubility: ≥ 2.5 mg/mL (7.59 mM); Clear solution
- Add each solvent one by one: 10% DMSO >> 90% corn oil  
Solubility: ≥ 2.5 mg/mL (7.59 mM); Clear solution

### BIOLOGICAL ACTIVITY

#### Description

Omeprazole metabolite Omeprazole sulfide (Ufiprazole) is a metabolite of Omeprazole, which is a proton pump inhibitor.

**Caution: Product has not been fully validated for medical applications. For research use only.**

Tel: 609-228-6898

Fax: 609-228-5909

E-mail: tech@MedChemExpress.com

Address: 1 Deer Park Dr, Suite Q, Monmouth Junction, NJ 08852, USA