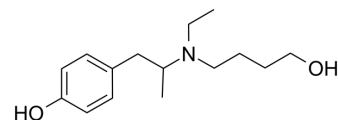


O-Desmethyl Mebeverine alcohol

Cat. No.:	HY-G0008
CAS No.:	155172-67-1
Molecular Formula:	C ₁₅ H ₂₅ NO ₂
Molecular Weight:	251.36
Target:	Adrenergic Receptor; Drug Metabolite
Pathway:	GPCR/G Protein; Neuronal Signaling; Metabolic Enzyme/Protease
Storage:	Please store the product under the recommended conditions in the Certificate of Analysis.



BIOLOGICAL ACTIVITY

Description	O-Desmethyl Mebeverine alcohol is a metabolite of Mebeverine, which is a potent α 1 receptor inhibitor, causing relaxation of the gastrointestinal tract.
IC₅₀ & Target	α 1 receptor

Caution: Product has not been fully validated for medical applications. For research use only.

Tel: 609-228-6898

Fax: 609-228-5909

E-mail: tech@MedChemExpress.com

Address: 1 Deer Park Dr, Suite Q, Monmouth Junction, NJ 08852, USA