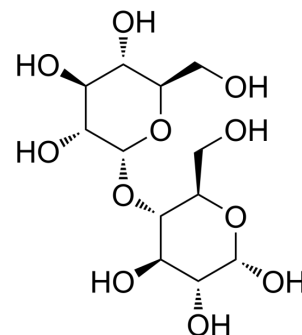


Maltose

Cat. No.:	HY-N2024		
CAS No.:	69-79-4		
Molecular Formula:	C ₁₂ H ₂₂ O ₁₁		
Molecular Weight:	342.3		
Target:	Endogenous Metabolite		
Pathway:	Metabolic Enzyme/Protease		
Storage:	Powder	-20°C	3 years
		4°C	2 years
	In solvent	-80°C	6 months
		-20°C	1 month



SOLVENT & SOLUBILITY

In Vitro	H ₂ O : 125 mg/mL (365.18 mM; Need ultrasonic)			
		Solvent	Mass	
		Concentration	1 mg	5 mg
	Preparing Stock Solutions		10 mg	
	1 mM	2.9214 mL	14.6071 mL	29.2141 mL
	5 mM	0.5843 mL	2.9214 mL	5.8428 mL
	10 mM	0.2921 mL	1.4607 mL	2.9214 mL
Please refer to the solubility information to select the appropriate solvent.				
In Vivo	1. Add each solvent one by one: PBS Solubility: 100 mg/mL (292.14 mM); Clear solution; Need ultrasonic			

BIOLOGICAL ACTIVITY

Description	Maltose is a disaccharide formed from two units of glucose joined with an $\alpha(1\rightarrow4)$ bond, a reducing sugar. Maltose monohydrate can be used as a energy source for bacteria.
IC₅₀ & Target	Human Endogenous Metabolite
In Vitro	Maltose is the two-unit member of the amylose homologous series, the key structural motif of starch. When beta-amylase breaks down starch, it removes two glucose units at a time, producing maltose. In the isomer isomaltose, the two glucose molecules are joined with an $\alpha(1\rightarrow6)$ bond. MCE has not independently confirmed the accuracy of these methods. They are for reference only.

CUSTOMER VALIDATION

- Molecules. 2023 Apr 11, 28(8), 3375.

See more customer validations on www.MedChemExpress.com

Caution: Product has not been fully validated for medical applications. For research use only.

Tel: 609-228-6898

Fax: 609-228-5909

E-mail: tech@MedChemExpress.com

Address: 1 Deer Park Dr, Suite Q, Monmouth Junction, NJ 08852, USA