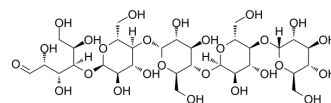


Maltopentaose

Cat. No.:	HY-N1495
CAS No.:	34620-76-3
Molecular Formula:	C ₃₀ H ₅₂ O ₂₆
Molecular Weight:	828.72
Target:	Endogenous Metabolite
Pathway:	Metabolic Enzyme/Protease
Storage:	-20°C, protect from light * In solvent : -80°C, 6 months; -20°C, 1 month (protect from light)



SOLVENT & SOLUBILITY

In Vitro	H ₂ O : 125 mg/mL (150.84 mM); Need ultrasonic					
	Preparing Stock Solutions	Solvent	Mass	1 mg	5 mg	10 mg
		Concentration				
		1 mM		1.2067 mL	6.0334 mL	12.0668 mL
		5 mM		0.2413 mL	1.2067 mL	2.4134 mL
10 mM		0.1207 mL	0.6033 mL	1.2067 mL		
Please refer to the solubility information to select the appropriate solvent.						
In Vivo	1. Add each solvent one by one: PBS Solubility: 100 mg/mL (120.67 mM); Clear solution; Need ultrasonic					

BIOLOGICAL ACTIVITY

Description	Maltopentaose is the shortest chain oligosaccharide that can be classified as maltodextrin and is also used in a study to investigate glycation and phosphorylation of α -lactalbumin.
IC₅₀ & Target	Human Endogenous Metabolite

REFERENCES

[1]. Maltopentaose is the shortest chain oligosaccharide that can be classified as maltodextrin and is also used in a study to investigate glycation and phosphorylation of α -lactalbumin.

Caution: Product has not been fully validated for medical applications. For research use only.

Tel: 609-228-6898

Fax: 609-228-5909

E-mail: tech@MedChemExpress.com

Address: 1 Deer Park Dr, Suite Q, Monmouth Junction, NJ 08852, USA