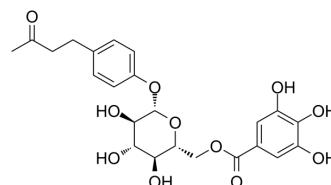


Lindleyin

| | |
|--------------------|--|
| Cat. No.: | HY-N2448 |
| CAS No.: | 59282-56-3 |
| Molecular Formula: | C ₂₃ H ₂₆ O ₁₁ |
| Molecular Weight: | 478.45 |
| Target: | Estrogen Receptor/ERR |
| Pathway: | Vitamin D Related/Nuclear Receptor |
| Storage: | 4°C, protect from light * In solvent : -80°C, 6 months; -20°C, 1 month (protect from light) |



SOLVENT & SOLUBILITY

| | | | | | | |
|---|---|--------------------------|-------|-----------|------------|------------|
| In Vitro | DMSO : 50 mg/mL (104.50 mM; Need ultrasonic) | | | | | |
| | Preparing Stock Solutions | Solvent Concentration | Mass | 1 mg | 5 mg | 10 mg |
| | | | 1 mM | 2.0901 mL | 10.4504 mL | 20.9008 mL |
| | | | 5 mM | 0.4180 mL | 2.0901 mL | 4.1802 mL |
| | | | 10 mM | 0.2090 mL | 1.0450 mL | 2.0901 mL |
| Please refer to the solubility information to select the appropriate solvent. | | | | | | |
| In Vivo | 1. Add each solvent one by one: 10% DMSO >> 40% PEG300 >> 5% Tween-80 >> 45% saline Solubility: ≥ 1.25 mg/mL (2.61 mM); Clear solution | | | | | |
| | 2. Add each solvent one by one: 10% DMSO >> 90% (20% SBE-β-CD in saline) Solubility: ≥ 1.25 mg/mL (2.61 mM); Clear solution | | | | | |
| | 3. Add each solvent one by one: 10% DMSO >> 90% corn oil Solubility: ≥ 1.25 mg/mL (2.61 mM); Clear solution | | | | | |

BIOLOGICAL ACTIVITY

| | |
|-------------|---|
| Description | Lindleyin, isolated from Rhei rhizoma, mediates hormonal effects through estrogen receptors. Lindleyin binds to ERα with estrogenic activity ^[1] . |
|-------------|---|

REFERENCES

[1]. Usui T, et al. The phytochemical lindleyin, isolated from Rhei rhizoma, mediates hormonal effects through estrogen receptors. J Endocrinol. 2002 Nov;175(2):289-96.

Caution: Product has not been fully validated for medical applications. For research use only.

Tel: 609-228-6898

Fax: 609-228-5909

E-mail: tech@MedChemExpress.com

Address: 1 Deer Park Dr, Suite Q, Monmouth Junction, NJ 08852, USA