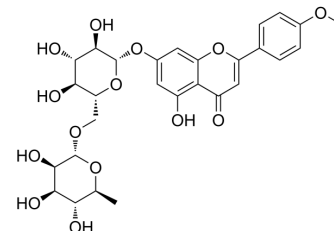


Linarin

Cat. No.:	HY-N0528
CAS No.:	480-36-4
Molecular Formula:	C ₂₈ H ₃₂ O ₁₄
Molecular Weight:	592.55
Target:	Cholinesterase (ChE); TNF Receptor
Pathway:	Neuronal Signaling; Apoptosis
Storage:	4°C, protect from light * In solvent : -80°C, 6 months; -20°C, 1 month (protect from light)



SOLVENT & SOLUBILITY

In Vitro	DMSO : 250 mg/mL (421.91 mM; Need ultrasonic)																	
	<table border="1"> <thead> <tr> <th rowspan="2">Solvent Concentration</th> <th rowspan="2">Mass</th> <th>1 mg</th> <th>5 mg</th> <th>10 mg</th> </tr> </thead> <tbody> <tr> <td>1 mM</td> <td>1.6876 mL</td> <td>8.4381 mL</td> <td>16.8762 mL</td> </tr> <tr> <td>5 mM</td> <td>0.3375 mL</td> <td>1.6876 mL</td> <td>3.3752 mL</td> </tr> <tr> <td>10 mM</td> <td>0.1688 mL</td> <td>0.8438 mL</td> <td>1.6876 mL</td> </tr> </tbody> </table>	Solvent Concentration	Mass	1 mg	5 mg	10 mg	1 mM	1.6876 mL	8.4381 mL	16.8762 mL	5 mM	0.3375 mL	1.6876 mL	3.3752 mL	10 mM	0.1688 mL	0.8438 mL	1.6876 mL
Solvent Concentration	Mass			1 mg	5 mg	10 mg												
		1 mM	1.6876 mL	8.4381 mL	16.8762 mL													
5 mM	0.3375 mL	1.6876 mL	3.3752 mL															
10 mM	0.1688 mL	0.8438 mL	1.6876 mL															
	Please refer to the solubility information to select the appropriate solvent.																	
In Vivo	<ol style="list-style-type: none"> Add each solvent one by one: 10% DMSO >> 40% PEG300 >> 5% Tween-80 >> 45% saline Solubility: ≥ 2.08 mg/mL (3.51 mM); Clear solution Add each solvent one by one: 10% DMSO >> 90% (20% SBE-β-CD in saline) Solubility: ≥ 2.08 mg/mL (3.51 mM); Clear solution Add each solvent one by one: 10% DMSO >> 90% corn oil Solubility: ≥ 2.08 mg/mL (3.51 mM); Clear solution 																	

BIOLOGICAL ACTIVITY

Description	Linarin (Buddleoside), isolated from the flower extract of <i>Mentha arvensis</i> , shows selective dose dependent inhibitory effect on acetylcholinesterase (AChE) ^[1] .
IC₅₀ & Target	AChE

REFERENCES

Caution: Product has not been fully validated for medical applications. For research use only.

Tel: 609-228-6898

Fax: 609-228-5909

E-mail: tech@MedChemExpress.com

Address: 1 Deer Park Dr, Suite Q, Monmouth Junction, NJ 08852, USA