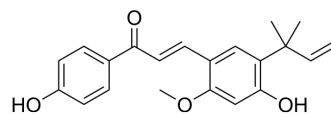


Licochalcone A

Cat. No.:	HY-N0372		
CAS No.:	58749-22-7		
Molecular Formula:	C ₂₁ H ₂₂ O ₄		
Molecular Weight:	338.4		
Target:	Autophagy		
Pathway:	Autophagy		
Storage:	Powder	-20°C	3 years
		4°C	2 years
	In solvent	-80°C	2 years
		-20°C	1 year



SOLVENT & SOLUBILITY

In Vitro

DMSO : 125 mg/mL (369.39 mM; Need ultrasonic)

Preparing Stock Solutions	Solvent Concentration	Mass		
		1 mg	5 mg	10 mg
	1 mM	2.9551 mL	14.7754 mL	29.5508 mL
	5 mM	0.5910 mL	2.9551 mL	5.9102 mL
	10 mM	0.2955 mL	1.4775 mL	2.9551 mL

Please refer to the solubility information to select the appropriate solvent.

In Vivo

- Add each solvent one by one: 10% DMSO >> 90% corn oil
Solubility: ≥ 2.5 mg/mL (7.39 mM); Clear solution
- Add each solvent one by one: 10% DMSO >> 40% PEG300 >> 5% Tween-80 >> 45% saline
Solubility: 2.08 mg/mL (6.15 mM); Suspended solution; Need ultrasonic
- Add each solvent one by one: 10% DMSO >> 90% (20% SBE-β-CD in saline)
Solubility: 2.08 mg/mL (6.15 mM); Suspended solution; Need ultrasonic

BIOLOGICAL ACTIVITY

Description

Licochalcone A (LCA), a flavonoid isolated, presents obvious anti-cancer effects, displays broad-spectrum inhibition against UDP-glucuronosyltransferases (UGTs)^[1]. Licochalcone A (LCA) exhibits strong inhibitory effects against UGT1A1, 1A3, 1A4, 1A6, 1A7, 1A9, and 2B7 (both IC₅₀ and K_i values lower than 5 μM)^[2].

In Vitro

Licochalcone A (LCA) exhibits strong inhibitory effects against UGT1A1, 1A3, 1A4, 1A6, 1A7, 1A9, and 2B7 (both IC₅₀ and K_i values lower than 5 μM)^[2].

MCE has not independently confirmed the accuracy of these methods. They are for reference only.

CUSTOMER VALIDATION

- Acta Pharm Sin B. 2021 Jan;11(1):143-155.
- EMBO Rep. 2022 Feb 3;23(2):e53499.
- Eur J Pharmacol. 2024 Feb 11;968:176418.
- Oncotargets Ther. 2021 Jan 8;13:13437-13450.
- Exp Eye Res. 2022 Nov 24;109335.

See more customer validations on www.MedChemExpress.com

REFERENCES

- [1]. Tang ZH, et al. Induction of C/EBP homologous protein-mediated apoptosis and autophagy by licochalcone A in non-small cell lung cancer cells. Sci Rep. 2016 May 17;6:26241... .
- [2]. Tang ZH, et al. Induction of C/EBP homologous protein-mediated apoptosis and autophagy by licochalcone A in non-small cell lung cancer cells. Sci Rep. 2016 May 17;6:26241... .
-

Caution: Product has not been fully validated for medical applications. For research use only.

Tel: 609-228-6898

Fax: 609-228-5909

E-mail: tech@MedChemExpress.com

Address: 1 Deer Park Dr, Suite Q, Monmouth Junction, NJ 08852, USA