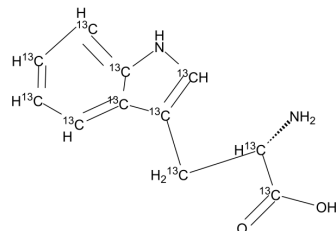


## L-Tryptophan-<sup>13</sup>C<sub>11</sub>

<b>Cat. No.:</b>	HY-N0623S2
<b>CAS No.:</b>	202114-65-6
<b>Molecular Formula:</b>	<sup>13</sup> C <sub>11</sub> H <sub>12</sub> N <sub>2</sub> O <sub>2</sub>
<b>Molecular Weight:</b>	215.14
<b>Target:</b>	Endogenous Metabolite; Isotope-Labeled Compounds
<b>Pathway:</b>	Metabolic Enzyme/Protease; Others
<b>Storage:</b>	4°C, protect from light * In solvent : -80°C, 6 months; -20°C, 1 month (protect from light)



### SOLVENT & SOLUBILITY

<b>In Vitro</b>	DMSO : 12.5 mg/mL (58.10 mM; Need ultrasonic)					
	H <sub>2</sub> O : < 0.1 mg/mL (ultrasonic;warming;heat to 60°C) (insoluble)					
	<b>Preparing Stock Solutions</b>	<b>Solvent</b>	<b>Mass</b>	<b>1 mg</b>	<b>5 mg</b>	<b>10 mg</b>
		<b>Concentration</b>				
		<b>1 mM</b>		4.6481 mL	23.2407 mL	46.4814 mL
<b>5 mM</b>			0.9296 mL	4.6481 mL	9.2963 mL	
<b>10 mM</b>		0.4648 mL	2.3241 mL	4.6481 mL		
Please refer to the solubility information to select the appropriate solvent.						
<b>In Vivo</b>	1. Add each solvent one by one: 10% DMSO >> 40% PEG300 >> 5% Tween-80 >> 45% saline Solubility: ≥ 1.25 mg/mL (5.81 mM); Clear solution					
	2. Add each solvent one by one: 10% DMSO >> 90% (20% SBE-β-CD in saline) Solubility: ≥ 1.25 mg/mL (5.81 mM); Clear solution					

### BIOLOGICAL ACTIVITY

<b>Description</b>	L-Tryptophan- <sup>13</sup> C <sub>11</sub> is the <sup>13</sup> C-labeled L-Tryptophan. L-Tryptophan (Tryptophan) is an essential amino acid that is the precursor of serotonin, melatonin, and vitamin B3[1].
<b>In Vitro</b>	Stable heavy isotopes of hydrogen, carbon, and other elements have been incorporated into drug molecules, largely as tracers for quantitation during the drug development process. Deuteration has gained attention because of its potential to affect the pharmacokinetic and metabolic profiles of drugs <sup>[1]</sup> . MCE has not independently confirmed the accuracy of these methods. They are for reference only.

### REFERENCES

**Caution: Product has not been fully validated for medical applications. For research use only.**

Tel: 609-228-6898

Fax: 609-228-5909

E-mail: [tech@MedChemExpress.com](mailto:tech@MedChemExpress.com)

Address: 1 Deer Park Dr, Suite Q, Monmouth Junction, NJ 08852, USA