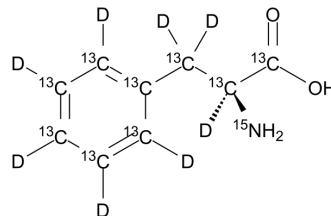


L-Phenylalanine-¹³C₉,¹⁵N,d₈

Cat. No.:	HY-N0215S9
CAS No.:	1994331-22-4
Molecular Formula:	¹³ C ₉ H ₃ D ₈ ¹⁵ N ₂ O ₂
Molecular Weight:	183.17
Target:	Calcium Channel; iGluR; Endogenous Metabolite; Isotope-Labeled Compounds
Pathway:	Membrane Transporter/Ion Channel; Neuronal Signaling; Metabolic Enzyme/Protease; Others
Storage:	Please store the product under the recommended conditions in the Certificate of Analysis.



BIOLOGICAL ACTIVITY

Description	L-Phenylalanine- ¹³ C ₉ , ¹⁵ N,d ₈ is the deuterium, ¹³ C-, and ¹⁵ N-labeled L-Phenylalanine. L-Phenylalanine ((S)-2-Amino-3-phenylpropionic acid) is an essential amino acid isolated from Escherichia coli. L-Phenylalanine is a α 2 δ subunit of voltage-dependent Ca ⁺ channels antagonist with a K _i of 980 nM. L-phenylalanine is a competitive antagonist for the glycine- and glutamate-binding sites of N-methyl-D-aspartate receptors (NMDARs) (K _B of 573 μ M) and non-NMDARs, respectively. L-Phenylalanine is widely used in the production of food flavors and pharmaceuticals[1][2][3][4].
IC₅₀ & Target	NMDA Receptor
In Vitro	Stable heavy isotopes of hydrogen, carbon, and other elements have been incorporated into drug molecules, largely as tracers for quantitation during the drug development process. Deuteration has gained attention because of its potential to affect the pharmacokinetic and metabolic profiles of drugs ^[1] . MCE has not independently confirmed the accuracy of these methods. They are for reference only.

REFERENCES

[1]. Russak EM, et al. Impact of Deuterium Substitution on the Pharmacokinetics of Pharmaceuticals. Ann Pharmacother. 2019;53(2):211-216.

Caution: Product has not been fully validated for medical applications. For research use only.

Tel: 609-228-6898

Fax: 609-228-5909

E-mail: tech@MedChemExpress.com

Address: 1 Deer Park Dr, Suite Q, Monmouth Junction, NJ 08852, USA