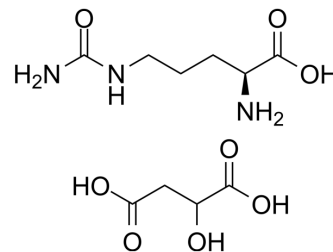


## L-Citrulline DL-malate

<b>Cat. No.:</b>	HY-N0391A
<b>CAS No.:</b>	70796-17-7
<b>Molecular Formula:</b>	C <sub>10</sub> H <sub>19</sub> N <sub>3</sub> O <sub>8</sub>
<b>Molecular Weight:</b>	309.27
<b>Target:</b>	Endogenous Metabolite; Biochemical Assay Reagents
<b>Pathway:</b>	Metabolic Enzyme/Protease; Others
<b>Storage:</b>	4°C, sealed storage, away from moisture * In solvent : -80°C, 6 months; -20°C, 1 month (sealed storage, away from moisture)



### SOLVENT & SOLUBILITY

#### In Vitro

H<sub>2</sub>O : 175 mg/mL (565.85 mM; Need ultrasonic)

Preparing Stock Solutions	Solvent		Mass		
	Concentration		1 mg	5 mg	10 mg
	1 mM		3.2334 mL	16.1671 mL	32.3342 mL
	5 mM		0.6467 mL	3.2334 mL	6.4668 mL
	10 mM		0.3233 mL	1.6167 mL	3.2334 mL

Please refer to the solubility information to select the appropriate solvent.

### BIOLOGICAL ACTIVITY

#### Description

L-Citrulline (DL-malate) is an organic compound commonly used as a nutritional supplement. It boosts the body's production of nitrogen oxides, improves circulation and athletic performance, and reduces muscle fatigue. In addition, L-Citrulline DL-malate also plays an important role in some industrial fields, for example, it is used in the field of agriculture to enhance plant immunity.

#### IC<sub>50</sub> & Target

Human Endogenous Metabolite

#### In Vitro

L-Citrulline DL-malate is a biochemical reagent that can be used as a biological material or organic compound for life science related research.  
MCE has not independently confirmed the accuracy of these methods. They are for reference only.

### CUSTOMER VALIDATION

- Front Immunol. 05 August 2022.

- 
- Exp Ther Med. August 22, 2022.
  - bioRxiv. 2023 Jun 3.

See more customer validations on [www.MedChemExpress.com](http://www.MedChemExpress.com)

**Caution: Product has not been fully validated for medical applications. For research use only.**

Tel: 609-228-6898

Fax: 609-228-5909

E-mail: [tech@MedChemExpress.com](mailto:tech@MedChemExpress.com)

Address: 1 Deer Park Dr, Suite Q, Monmouth Junction, NJ 08852, USA