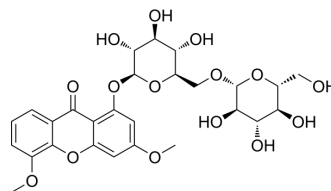


## Kouitchenside G

Cat. No.:	HY-N11530
CAS No.:	1444411-75-9
Molecular Formula:	C <sub>27</sub> H <sub>32</sub> O <sub>15</sub>
Molecular Weight:	596.53
Target:	Glucosidase
Pathway:	Metabolic Enzyme/Protease
Storage:	Please store the product under the recommended conditions in the Certificate of Analysis.



### BIOLOGICAL ACTIVITY

Description	Kouitchenside G is a natural product that can be isolated from <i>Swertia kouitchensis</i> . Kouitchenside G inhibits $\alpha$ -Glucosidase with an IC <sub>50</sub> of 956 $\mu$ M <sup>[1]</sup> .
IC <sub>50</sub> & Target	IC <sub>50</sub> : 956 $\mu$ M ( $\alpha$ -Glucosidase) <sup>[1]</sup>

### REFERENCES

[1]. Wan LS, et al. Xanthone glycoside constituents of *Swertia kouitchensis* with  $\alpha$ -glucosidase inhibitory activity. *J Nat Prod*. 2013 Jul 26;76(7):1248-53.

**Caution: Product has not been fully validated for medical applications. For research use only.**

Tel: 609-228-6898

Fax: 609-228-5909

E-mail: tech@MedChemExpress.com

Address: 1 Deer Park Dr, Suite Q, Monmouth Junction, NJ 08852, USA