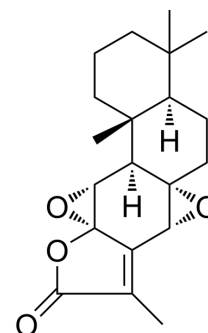


## Jolkinolide B

|                    |  |
|--------------------|--|
| Cat. No.:          | HY-N0732   |
| CAS No.:           | 37905-08-1   |
| Molecular Formula: | C <sub>20</sub> H <sub>26</sub> O <sub>4</sub>   |
| Molecular Weight:  | 330.42   |
| Target:            | Apoptosis  |
| Pathway:           | Apoptosis  |
| Storage:           | -20°C, protect from light<br>* In solvent : -80°C, 6 months; -20°C, 1 month (protect from light) |



### SOLVENT & SOLUBILITY

#### In Vitro

DMSO : 8.33 mg/mL (25.21 mM); ultrasonic and warming and heat to 60°C

| Preparing Stock Solutions | Solvent Mass  |  | 1 mg      | 5 mg       | 10 mg      |
|---------------------------|---------------|--|-----------|------------|------------|
|                           | Concentration |  |           |            |            |
|                           | 1 mM          |  | 3.0265 mL | 15.1323 mL | 30.2645 mL |
|                           | 5 mM          |  | 0.6053 mL | 3.0265 mL  | 6.0529 mL  |
|                           | 10 mM         |  | 0.3026 mL | 1.5132 mL  | 3.0265 mL  |

Please refer to the solubility information to select the appropriate solvent.

### BIOLOGICAL ACTIVITY

#### Description

Jolkinolide B, a bioactive diterpene isolated from the roots of *Euphorbia fischeriana* Steud, is known to induce apoptosis in cancer cells<sup>[1]</sup>.

#### IC<sub>50</sub> & Target

IC<sub>50</sub>: apoptosis<sup>[1]</sup>

### CUSTOMER VALIDATION

- PLoS One. 2024 Apr 17;19(4):e0299920.

See more customer validations on [www.MedChemExpress.com](http://www.MedChemExpress.com)

### REFERENCES

---

[1]. Wang, J., Zhou, Y., Bai, X. et al. Jolkinolide B from *Euphorbia fischeriana* Steud induces apoptosis in human leukemic U937 cells through PI3K/Akt and XIAP pathways. *Mol Cells* 32, 451–457 (2011).

---

**Caution: Product has not been fully validated for medical applications. For research use only.**

Tel: 609-228-6898

Fax: 609-228-5909

E-mail: [tech@MedChemExpress.com](mailto:tech@MedChemExpress.com)

Address: 1 Deer Park Dr, Suite Q, Monmouth Junction, NJ 08852, USA