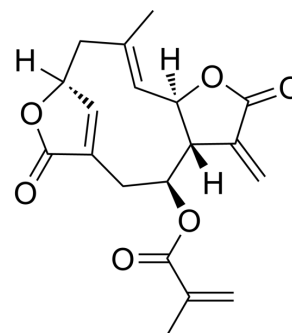


## Isodeoxyelephantopin

<b>Cat. No.:</b>	HY-N2585
<b>CAS No.:</b>	38927-54-7
<b>Molecular Formula:</b>	C <sub>19</sub> H <sub>20</sub> O <sub>6</sub>
<b>Molecular Weight:</b>	344.36
<b>Target:</b>	NF-κB; Autophagy; Reactive Oxygen Species
<b>Pathway:</b>	NF-κB; Autophagy; Immunology/Inflammation; Metabolic Enzyme/Protease
<b>Storage:</b>	-20°C, protect from light * In solvent : -80°C, 6 months; -20°C, 1 month (protect from light)



### BIOLOGICAL ACTIVITY

<b>Description</b>	Isodeoxyelephantopin is a sesquiterpene lactone isolated from <i>Elephantopus scaber</i> . Isodeoxyelephantopin induces ROS generation, suppresses NF-κB activation. Isodeoxyelephantopin also modulates LncRNA expression and exhibit activities against breast cancer <sup>[1][2]</sup> .
<b>In Vitro</b>	Isodeoxyelephantopin induces protective autophagy in lung cancer cells via Nrf2-p62-keap1 feedback loop. MCE has not independently confirmed the accuracy of these methods. They are for reference only.

### REFERENCES

[1]. Verma SS, et al. Isodeoxyelephantopin, a Sesquiterpene Lactone Induces ROS Generation, Suppresses NF-κB Activation, Modulates LncRNA Expression and Exhibit Activities Against Breast Cancer. *Sci Rep.* 2019 Nov 29;9(1):17980.

[2]. Yunna Kim, et al. Treatment of Hominis placenta pharmacopuncture for a patient with mild neurocognitive disorder: Case report. *J Pharmacopuncture.* 2019 Dec; 22(4): 279–283.

**Caution: Product has not been fully validated for medical applications. For research use only.**

Tel: 609-228-6898

Fax: 609-228-5909

E-mail: tech@MedChemExpress.com

Address: 1 Deer Park Dr, Suite Q, Monmouth Junction, NJ 08852, USA