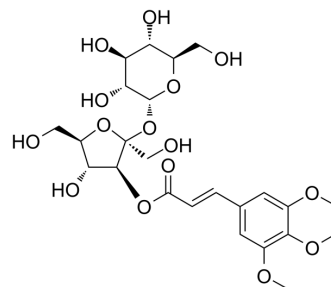


## Glomeratose A

<b>Cat. No.:</b>	HY-N2498
<b>CAS No.:</b>	202471-84-9
<b>Molecular Formula:</b>	C <sub>24</sub> H <sub>34</sub> O <sub>15</sub>
<b>Molecular Weight:</b>	562.52
<b>Target:</b>	Lactate Dehydrogenase
<b>Pathway:</b>	Metabolic Enzyme/Protease
<b>Storage:</b>	4°C, protect from light * In solvent : -80°C, 6 months; -20°C, 1 month (protect from light)



### SOLVENT & SOLUBILITY

<b>In Vitro</b>	DMSO : 100 mg/mL (177.77 mM; Need ultrasonic)				
		Solvent Concentration	Mass		
	<b>Preparing Stock Solutions</b>		1 mg	5 mg	10 mg
		1 mM	1.7777 mL	8.8886 mL	17.7771 mL
		5 mM	0.3555 mL	1.7777 mL	3.5554 mL
10 mM	0.1778 mL	0.8889 mL	1.7777 mL		
Please refer to the solubility information to select the appropriate solvent.					
<b>In Vivo</b>	1. Add each solvent one by one: 10% DMSO >> 40% PEG300 >> 5% Tween-80 >> 45% saline Solubility: ≥ 2.5 mg/mL (4.44 mM); Clear solution				
	2. Add each solvent one by one: 10% DMSO >> 90% (20% SBE-β-CD in saline) Solubility: ≥ 2.5 mg/mL (4.44 mM); Clear solution				
	3. Add each solvent one by one: 10% DMSO >> 90% corn oil Solubility: ≥ 2.5 mg/mL (4.44 mM); Clear solution				

### BIOLOGICAL ACTIVITY

<b>Description</b>	Glomeratose A is a lactate dehydrogenase inhibitor, isolated from <i>Polygala tenuifolia</i> <sup>[1]</sup> .
<b>IC<sub>50</sub> &amp; Target</b>	IC50: Lactate dehydrogenase <sup>[1]</sup>

### REFERENCES

[1]. Li S, et al. Bioactivity screening, extraction, and separation of lactate dehydrogenase inhibitors from *Polygala tenuifolia* Willd. based on a hyphenated strategy. *J Sep*

**Caution: Product has not been fully validated for medical applications. For research use only.**

Tel: 609-228-6898

Fax: 609-228-5909

E-mail: [tech@MedChemExpress.com](mailto:tech@MedChemExpress.com)

Address: 1 Deer Park Dr, Suite Q, Monmouth Junction, NJ 08852, USA