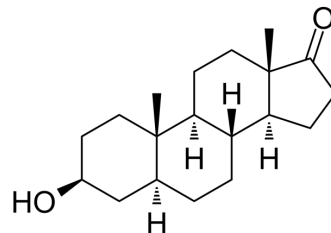


## Epiandrosterone

<b>Cat. No.:</b>	HY-I0352		
<b>CAS No.:</b>	481-29-8		
<b>Molecular Formula:</b>	C <sub>19</sub> H <sub>30</sub> O <sub>2</sub>		
<b>Molecular Weight:</b>	290.44		
<b>Target:</b>	Androgen Receptor; Endogenous Metabolite		
<b>Pathway:</b>	Vitamin D Related/Nuclear Receptor; Metabolic Enzyme/Protease		
<b>Storage:</b>	Powder	-20°C	3 years
		4°C	2 years
	In solvent	-80°C	2 years
		-20°C	1 year



### SOLVENT & SOLUBILITY

#### In Vitro

DMSO : 50 mg/mL (172.15 mM; Need ultrasonic)  
 H<sub>2</sub>O : < 0.1 mg/mL (insoluble)

Preparing Stock Solutions	Solvent Concentration	Mass		
		1 mg	5 mg	10 mg
	1 mM	3.4431 mL	17.2153 mL	34.4305 mL
	5 mM	0.6886 mL	3.4431 mL	6.8861 mL
	10 mM	0.3443 mL	1.7215 mL	3.4431 mL

Please refer to the solubility information to select the appropriate solvent.

#### In Vivo

- Add each solvent one by one: 10% DMSO >> 40% PEG300 >> 5% Tween-80 >> 45% saline  
 Solubility: ≥ 5 mg/mL (17.22 mM); Clear solution
- Add each solvent one by one: 10% DMSO >> 90% (20% SBE-β-CD in saline)  
 Solubility: ≥ 2.5 mg/mL (8.61 mM); Clear solution
- Add each solvent one by one: 10% DMSO >> 90% corn oil  
 Solubility: ≥ 2.5 mg/mL (8.61 mM); Clear solution

### BIOLOGICAL ACTIVITY

#### Description

Epiandrosterone is a steroid hormone with weak androgenic activity. Epiandrosterone is naturally produced by the enzyme 5α-reductase from the adrenal hormone DHEA.

#### IC<sub>50</sub> & Target

Human Endogenous Metabolite	Human Endogenous Metabolite
-----------------------------	-----------------------------

---

## REFERENCES

---

[1]. Mitamura K, et al. Determination of sulfates of androsterone and epiandrosterone in human serum using isotope diluted liquid chromatography-electrospray ionization-mass spectrometry. Biomed Chromatogr. 2005 Dec;19(10):796-801.

---

**Caution: Product has not been fully validated for medical applications. For research use only.**

Tel: 609-228-6898

Fax: 609-228-5909

E-mail: [tech@MedChemExpress.com](mailto:tech@MedChemExpress.com)

Address: 1 Deer Park Dr, Suite Q, Monmouth Junction, NJ 08852, USA