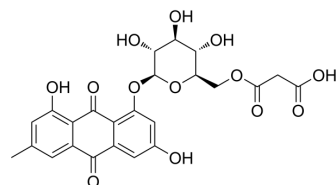


Emoghrelin

Cat. No.:	HY-N12348
CAS No.:	928262-58-2
Molecular Formula:	C ₂₄ H ₂₂ O ₁₃
Molecular Weight:	518.42
Target:	GHSR
Pathway:	GPCR/G Protein
Storage:	Please store the product under the recommended conditions in the Certificate of Analysis.



BIOLOGICAL ACTIVITY

Description

Emoghrelin, isolated from Heshouwu *Polygonum multiflorum*, stimulates growth hormone secretion via activation of the ghrelin receptor^[1].

REFERENCES

[1]. Yuan-Hao Lo, et al. Emoghrelin, a unique emodin derivative in Heshouwu, stimulates growth hormone secretion via activation of the ghrelin receptor. *J Ethnopharmacol.* 2015 Jan 15;159:1-8.

Caution: Product has not been fully validated for medical applications. For research use only.

Tel: 609-228-6898

Fax: 609-228-5909

E-mail: tech@MedChemExpress.com

Address: 1 Deer Park Dr, Suite Q, Monmouth Junction, NJ 08852, USA