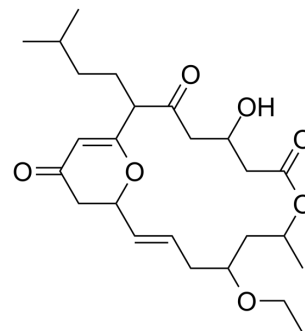


Ellipyron B

Cat. No.:	HY-N10362
Molecular Formula:	C ₂₅ H ₃₈ O ₇
Molecular Weight:	450.57
Target:	Dipeptidyl Peptidase
Pathway:	Metabolic Enzyme/Protease
Storage:	Please store the product under the recommended conditions in the Certificate of Analysis.



BIOLOGICAL ACTIVITY

Description

Ellipyron B, an antihyperglycemic γ -pyrone enclosed macrocyclic polyketide, shows inhibition potential against dipeptidyl peptidase-4 (IC₅₀=0.48 mM)^[1].

REFERENCES

[1]. Paulose, S.K., et al. Ellipyrones A-B, from oval bone cuttlefish *Sepia elliptica*: Antihyperglycemic γ -pyrone enclosed macrocyclic polyketides attenuate dipeptidyl peptidase-4 and carbolytic enzymes. *Med Chem Res* 31, 462–473 (2022).

Caution: Product has not been fully validated for medical applications. For research use only.

Tel: 609-228-6898

Fax: 609-228-5909

E-mail: tech@MedChemExpress.com

Address: 1 Deer Park Dr, Suite Q, Monmouth Junction, NJ 08852, USA