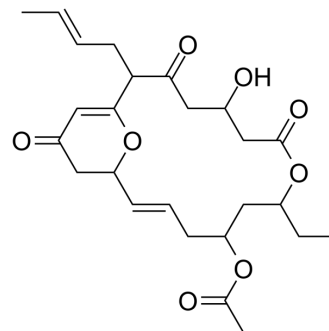


Ellipyron A

Cat. No.:	HY-N10360
Molecular Formula:	C ₂₅ H ₃₄ O ₈
Molecular Weight:	462.53
Target:	Dipeptidyl Peptidase
Pathway:	Metabolic Enzyme/Protease
Storage:	Please store the product under the recommended conditions in the Certificate of Analysis.



BIOLOGICAL ACTIVITY

Description

Ellipyron A, a γ -pyrone enclosed macrocyclic polyketide, shows inhibition potential against dipeptidyl peptidase-4 (IC_{50} = 0.35 mM). Ellipyron A also has anti-carbolytic property against α -glucosidase (IC_{50} = 0.74 mM) and α -amylase (IC_{50} = 0.59 mM)^[1].

REFERENCES

[1]. Paulose, S.K., et al. Ellipyrones A-B, from oval bone cuttlefish *Sepia elliptica*: Antihyperglycemic γ -pyrone enclosed macrocyclic polyketides attenuate dipeptidyl peptidase-4 and carbolytic enzymes. *Med Chem Res* 31, 462–473 (2022).

Caution: Product has not been fully validated for medical applications. For research use only.

Tel: 609-228-6898

Fax: 609-228-5909

E-mail: tech@MedChemExpress.com

Address: 1 Deer Park Dr, Suite Q, Monmouth Junction, NJ 08852, USA