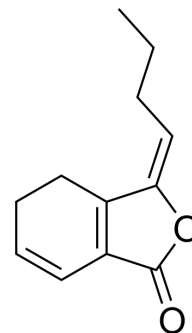


## (E)-Ligustilide

<b>Cat. No.:</b>	HY-N0401B
<b>CAS No.:</b>	81944-08-3
<b>Molecular Formula:</b>	C <sub>12</sub> H <sub>14</sub> O <sub>2</sub>
<b>Molecular Weight:</b>	190.24
<b>Target:</b>	Others
<b>Pathway:</b>	Others
<b>Storage:</b>	Please store the product under the recommended conditions in the Certificate of Analysis.



### BIOLOGICAL ACTIVITY

Description	(E)-Ligustilide is isolated from <i>Angelica sinensis</i> and has nephroprotective effects <sup>[1]</sup> .								
In Vitro	<p>(E)-Ligustilide (50 μM; 24-72 hours) decreases HK-2 cell survival to 86%, to 67% and to 49% for 24, 48 or 72 hours incubation, respectively<sup>[1]</sup>.</p> <p>(E)-Ligustilide (50 μM; 48-72 hours) alone decreases the metabolic activity to 87±6% and 71±8% after 48 and 72 h incubation, respectively, as compared to the control condition in HK-2 cells<sup>[1]</sup>.</p> <p>MCE has not independently confirmed the accuracy of these methods. They are for reference only.</p> <p>Cell Viability Assay<sup>[1]</sup></p> <table border="1"> <tr> <td>Cell Line:</td> <td>HK-2 cell</td> </tr> <tr> <td>Concentration:</td> <td>50 μM</td> </tr> <tr> <td>Incubation Time:</td> <td>24 hours, 48 hours and 72 hours</td> </tr> <tr> <td>Result:</td> <td>Decreased cell survival as a dose-dependent manner.</td> </tr> </table>	Cell Line:	HK-2 cell	Concentration:	50 μM	Incubation Time:	24 hours, 48 hours and 72 hours	Result:	Decreased cell survival as a dose-dependent manner.
Cell Line:	HK-2 cell								
Concentration:	50 μM								
Incubation Time:	24 hours, 48 hours and 72 hours								
Result:	Decreased cell survival as a dose-dependent manner.								

### REFERENCES

[1]. Bunel V, et al. Nephroprotective effects of ferulic acid, Z-ligustilide and E-ligustilide isolated from *Angelica sinensis* against cisplatin toxicity in vitro. *Toxicol In Vitro*. 2015 Apr;29(3):458-67.

**Caution: Product has not been fully validated for medical applications. For research use only.**

Tel: 609-228-6898

Fax: 609-228-5909

E-mail: tech@MedChemExpress.com

Address: 1 Deer Park Dr, Suite Q, Monmouth Junction, NJ 08852, USA