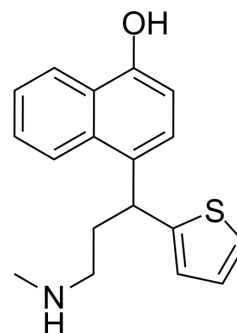


Duloxetine metabolite Para-Naphthol Duloxetine

Cat. No.:	HY-G0005		
CAS No.:	949095-98-1		
Molecular Formula:	C ₁₈ H ₁₉ NOS		
Molecular Weight:	297.41		
Target:	Drug Metabolite		
Pathway:	Metabolic Enzyme/Protease		
Storage:	Powder	-20°C	3 years
	In solvent	-80°C	6 months
		-20°C	1 month



BIOLOGICAL ACTIVITY

Description

Para-Naphthol Duloxetine is a metabolite of Duloxetine, which is a serotonin-norepinephrine reuptake inhibitor (SNRI).

Caution: Product has not been fully validated for medical applications. For research use only.

Tel: 609-228-6898

Fax: 609-228-5909

E-mail: tech@MedChemExpress.com

Address: 1 Deer Park Dr, Suite Q, Monmouth Junction, NJ 08852, USA