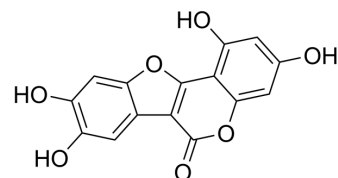


Demethylwedelolactone

Cat. No.:	HY-N2028		
CAS No.:	6468-55-9		
Molecular Formula:	C ₁₅ H ₈ O ₇		
Molecular Weight:	300.22		
Target:	Ser/Thr Protease		
Pathway:	Metabolic Enzyme/Protease		
Storage:	Powder	-20°C	3 years
		4°C	2 years
	In solvent	-80°C	6 months
		-20°C	1 month



SOLVENT & SOLUBILITY

In Vitro

DMSO : 100 mg/mL (333.09 mM; Need ultrasonic)

Concentration	Solvent	Mass		
		1 mg	5 mg	10 mg
1 mM		3.3309 mL	16.6545 mL	33.3089 mL
5 mM		0.6662 mL	3.3309 mL	6.6618 mL
10 mM		0.3331 mL	1.6654 mL	3.3309 mL

Please refer to the solubility information to select the appropriate solvent.

BIOLOGICAL ACTIVITY

Description

Demethylwedelolactone is a naturally occurring coumestan isolated from *Eclipta alba*. Demethylwedelolactone is a potent trypsin inhibitor with an IC₅₀ of 3.0 μM. Demethylwedelolactone suppresses cell motility and cell invasion of breast cancer cell^{[1][2]}.

IC₅₀ & Target

IC₅₀: 3.0 μM (trypsin)^[1]

REFERENCES

[1]. Syed SD, et al. Trypsin inhibitory effect of wedelolactone and demethylwedelolactone. *Phytother Res.* 2003 Apr;17(4):420-1.

[2]. Lee YJ, et al. Demethylwedelolactone derivatives inhibit invasive growth in vitro and lung metastasis of MDA-MB-231 breast cancer cells in nude mice. *Eur J Med Chem.* 2012 Oct;56:361-7.

Caution: Product has not been fully validated for medical applications. For research use only.

Tel: 609-228-6898

Fax: 609-228-5909

E-mail: tech@MedChemExpress.com

Address: 1 Deer Park Dr, Suite Q, Monmouth Junction, NJ 08852, USA