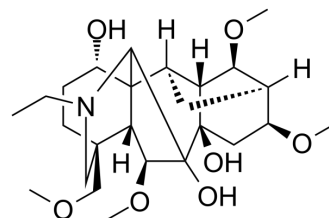


Delsoline

Cat. No.:	HY-N0789
CAS No.:	509-18-2
Molecular Formula:	C ₂₅ H ₄₁ NO ₇
Molecular Weight:	467.6
Target:	Others
Pathway:	Others
Storage:	4°C, sealed storage, away from moisture and light * In solvent : -80°C, 6 months; -20°C, 1 month (sealed storage, away from moisture and light)



SOLVENT & SOLUBILITY

In Vitro

DMSO : 6.67 mg/mL (14.26 mM; ultrasonic and warming and heat to 60°C)

Concentration	Solvent	Mass		
		1 mg	5 mg	10 mg
Preparing Stock Solutions	1 mM	2.1386 mL	10.6929 mL	21.3858 mL
	5 mM	0.4277 mL	2.1386 mL	4.2772 mL
	10 mM	0.2139 mL	1.0693 mL	2.1386 mL

Please refer to the solubility information to select the appropriate solvent.

In Vivo

- Add each solvent one by one: 10% DMSO >> 40% PEG300 >> 5% Tween-80 >> 45% saline
Solubility: ≥ 1.25 mg/mL (2.67 mM); Clear solution
- Add each solvent one by one: 10% DMSO >> 90% (20% SBE-β-CD in saline)
Solubility: ≥ 1.25 mg/mL (2.67 mM); Clear solution
- Add each solvent one by one: 10% DMSO >> 90% corn oil
Solubility: ≥ 1.25 mg/mL (2.67 mM); Clear solution

BIOLOGICAL ACTIVITY

Description

Delsoline, a major alkaloid of *Delphinium anthriscifolium* Hance, has both a curare-like effect and a ganglion-blocking effect and is used to relieve muscle tension or hyperkinesia. *D. anthriscifolium* Hance has effects of dispelling wind and dampness, activating collaterals, and relieving pains and is used to treat rheumatism, hemiplegia, indigestion, and cough^[1].

REFERENCES

Caution: Product has not been fully validated for medical applications. For research use only.

Tel: 609-228-6898

Fax: 609-228-5909

E-mail: tech@MedChemExpress.com

Address: 1 Deer Park Dr, Suite Q, Monmouth Junction, NJ 08852, USA