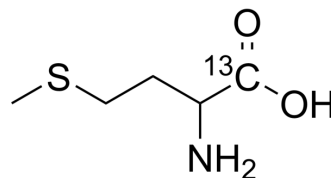


## DL-Methionine-<sup>13</sup>C

<b>Cat. No.:</b>	HY-N0325S
<b>CAS No.:</b>	68799-90-6
<b>Molecular Formula:</b>	C <sub>4</sub> <sup>13</sup> CH <sub>11</sub> NO <sub>2</sub> S
<b>Molecular Weight:</b>	150.2
<b>Target:</b>	Parasite; Isotope-Labeled Compounds
<b>Pathway:</b>	Anti-infection; Others
<b>Storage:</b>	Please store the product under the recommended conditions in the Certificate of Analysis.



### BIOLOGICAL ACTIVITY

<b>Description</b>	DL-Methionine- <sup>13</sup> C is the <sup>13</sup> C-labeled DL-Methionine. DL-Methionine is an essential amino acid containing sulfur with oxidative stress defense effects. DL-Methionine can be used for animal natural feed. DL-Methionine also kills <i>H. rostochiensis</i> on potato plants[1][2][3].
<b>In Vitro</b>	Stable heavy isotopes of hydrogen, carbon, and other elements have been incorporated into drug molecules, largely as tracers for quantitation during the drug development process. Deuteration has gained attention because of its potential to affect the pharmacokinetic and metabolic profiles of drugs <sup>[1]</sup> . MCE has not independently confirmed the accuracy of these methods. They are for reference only.

### REFERENCES

- [1]. Russak EM, et al. Impact of Deuterium Substitution on the Pharmacokinetics of Pharmaceuticals. *Ann Pharmacother.* 2019;53(2):211-216.
- [2]. K. evans, et al. Effects of amino acids on the reproduction of *Heterodera rostochiensis*. *Nematologica*, 1971, 17(4), 495-500.
- [3]. Swennen Q, et al. Effects of dietary protein content and 2-hydroxy-4-methylthiobutanoic acid or DL-methionine supplementation on performance and oxidative status of broiler chickens. *Br J Nutr.* 2011 Dec;106(12):1845-54.
- [4]. Garlich JD. Response of broilers to DL-methionine hydroxy analog free acid, DL-methionine, and L-methionine. *Poult Sci.* 1985 Aug;64(8):1541-8.

**Caution: Product has not been fully validated for medical applications. For research use only.**

Tel: 609-228-6898

Fax: 609-228-5909

E-mail: tech@MedChemExpress.com

Address: 1 Deer Park Dr, Suite Q, Monmouth Junction, NJ 08852, USA