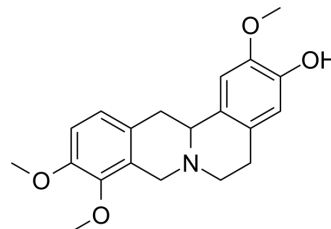


Corypalmine

Cat. No.:	HY-N0654
CAS No.:	27313-86-6
Molecular Formula:	C ₂₀ H ₂₃ NO ₄
Molecular Weight:	341.4
Target:	Fungal
Pathway:	Anti-infection
Storage:	4°C, protect from light * In solvent : -80°C, 6 months; -20°C, 1 month (protect from light)



SOLVENT & SOLUBILITY

In Vitro	DMSO : 33.33 mg/mL (97.63 mM; Need ultrasonic)						
	Preparing Stock Solutions	Solvent Concentration	Mass	1 mg	5 mg	10 mg	
				1 mM	2.9291 mL	14.6456 mL	29.2912 mL
				5 mM	0.5858 mL	2.9291 mL	5.8582 mL
				10 mM	0.2929 mL	1.4646 mL	2.9291 mL
Please refer to the solubility information to select the appropriate solvent.							
In Vivo	1. Add each solvent one by one: 10% DMSO >> 40% PEG300 >> 5% Tween-80 >> 45% saline Solubility: ≥ 2.5 mg/mL (7.32 mM); Clear solution						
	2. Add each solvent one by one: 10% DMSO >> 90% (20% SBE-β-CD in saline) Solubility: ≥ 2.5 mg/mL (7.32 mM); Clear solution						

BIOLOGICAL ACTIVITY

Description	Corypalmine is an alkaloid from <i>Stephania cepharantha</i> . Corypalmine is an antifungal.
-------------	--

REFERENCES

[1]. Mitul Goel, et al. Effect of Ent-norsecurinine, an Alkaloid, on Spore Germination of Some Fun. Mycobiology 30(4): 225-227 (2002).

Caution: Product has not been fully validated for medical applications. For research use only.

Tel: 609-228-6898

Fax: 609-228-5909

E-mail: tech@MedChemExpress.com

Address: 1 Deer Park Dr, Suite Q, Monmouth Junction, NJ 08852, USA