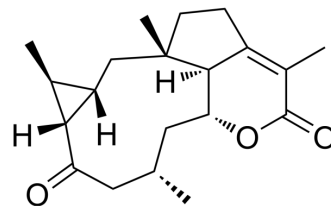


Clavirolide L

Cat. No.:	HY-N11780
Molecular Formula:	C ₂₀ H ₂₈ O ₃
Molecular Weight:	316.43
Target:	HIV
Pathway:	Anti-infection
Storage:	Please store the product under the recommended conditions in the Certificate of Analysis.



BIOLOGICAL ACTIVITY

Description	Clavirolide L (Compound 3) is a dolabellane-type diterpenoid that can be isolated from <i>Clavularia viridis</i> . Clavirolide L shows significant inhibition against HIV-1 without RT enzyme inhibition and can be used for HIV infection research ^[1] .
IC ₅₀ & Target	HIV-1

REFERENCES

[1]. Dong X, et.al. Targeted Isolation of Dolabellane Diterpenoids from the Soft Coral *Clavularia viridis* Using Molecular Networking. *ACS Omega*. 2023 May 26;8(23):21254-21264.

Caution: Product has not been fully validated for medical applications. For research use only.

Tel: 609-228-6898

Fax: 609-228-5909

E-mail: tech@MedChemExpress.com

Address: 1 Deer Park Dr, Suite Q, Monmouth Junction, NJ 08852, USA