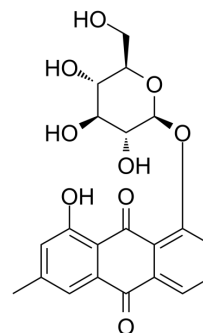


Chrysophanol 8-O-glucoside

Cat. No.:	HY-N2395
CAS No.:	13241-28-6
Molecular Formula:	C ₂₁ H ₂₀ O ₉
Molecular Weight:	416.38
Target:	Elastase
Pathway:	Metabolic Enzyme/Protease
Storage:	4°C, sealed storage, away from moisture and light * In solvent : -80°C, 6 months; -20°C, 1 month (sealed storage, away from moisture and light)



SOLVENT & SOLUBILITY

In Vitro

DMSO : 50 mg/mL (120.08 mM; ultrasonic and warming and heat to 60°C)

Concentration	Solvent	Mass		
		1 mg	5 mg	10 mg
Preparing Stock Solutions	1 mM	2.4017 mL	12.0083 mL	24.0165 mL
	5 mM	0.4803 mL	2.4017 mL	4.8033 mL
	10 mM	0.2402 mL	1.2008 mL	2.4017 mL

Please refer to the solubility information to select the appropriate solvent.

BIOLOGICAL ACTIVITY

Description

Chrysophanol 8-O-glucoside, from the roots of *Rumex acetosa*, shows moderate elastase inhibition activity^[1].

CUSTOMER VALIDATION

- Biomed Res Int. 2021 Sep 9;2021:9066938.

See more customer validations on www.MedChemExpress.com

REFERENCES

- [1]. T. Annamalai, et al. Pulmatin from the roots of *Rumex acetosa*. Scholars Research Library. Der Pharmacia Lettre, 2013, 5 (5):116-119.

Caution: Product has not been fully validated for medical applications. For research use only.

Tel: 609-228-6898

Fax: 609-228-5909

E-mail: tech@MedChemExpress.com

Address: 1 Deer Park Dr, Suite Q, Monmouth Junction, NJ 08852, USA