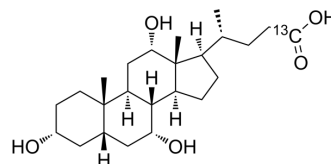


## Cholic acid-<sup>13</sup>C

<b>Cat. No.:</b>	HY-N0324S2		
<b>CAS No.:</b>	52886-36-9		
<b>Molecular Formula:</b>	C <sub>23</sub> <sup>13</sup> CH <sub>40</sub> O <sub>5</sub>		
<b>Molecular Weight:</b>	409.56		
<b>Target:</b>	Endogenous Metabolite		
<b>Pathway:</b>	Metabolic Enzyme/Protease		
<b>Storage:</b>	Powder	-20°C	3 years
		4°C	2 years
	In solvent	-80°C	6 months
		-20°C	1 month



### SOLVENT & SOLUBILITY

#### In Vitro

DMSO : ≥ 100 mg/mL (244.16 mM)  
 \* "≥" means soluble, but saturation unknown.

Preparing Stock Solutions	Solvent	Mass	1 mg	5 mg	10 mg
	Concentration				
	1 mM		2.4416 mL	12.2082 mL	24.4164 mL
	5 mM		0.4883 mL	2.4416 mL	4.8833 mL
	10 mM		0.2442 mL	1.2208 mL	2.4416 mL

Please refer to the solubility information to select the appropriate solvent.

### BIOLOGICAL ACTIVITY

#### Description

Cholic acid-<sup>13</sup>C is the <sup>13</sup>C-labeled Cholic acid. Cholic acid is a major primary bile acid produced in the liver and usually conjugated with glycine or taurine. It facilitates fat absorption and cholesterol excretion.

#### In Vitro

Stable heavy isotopes of hydrogen, carbon, and other elements have been incorporated into drug molecules, largely as tracers for quantitation during the drug development process. Deuteration has gained attention because of its potential to affect the pharmacokinetic and metabolic profiles of drugs<sup>[1]</sup>.  
 MCE has not independently confirmed the accuracy of these methods. They are for reference only.

### REFERENCES

- [1]. Russak EM, et al. Impact of Deuterium Substitution on the Pharmacokinetics of Pharmaceuticals. *Ann Pharmacother.* 2019;53(2):211-216.  
 [2]. Li Y, et al. Mechanism of hepatic targeting via oral administration of DSPE-PEG-Cholic acid-modified nanoliposomes. *Int J Nanomedicine.* 2017 Feb 28;12:1673-1684.

**Caution: Product has not been fully validated for medical applications. For research use only.**

Tel: 609-228-6898

Fax: 609-228-5909

E-mail: [tech@MedChemExpress.com](mailto:tech@MedChemExpress.com)

Address: 1 Deer Park Dr, Suite Q, Monmouth Junction, NJ 08852, USA