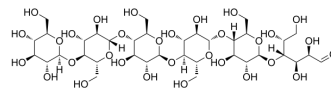


Cellohexaose

Cat. No.:	HY-N1915
CAS No.:	2478-35-5
Molecular Formula:	C ₃₆ H ₆₂ O ₃₁
Molecular Weight:	990.86
Target:	Endogenous Metabolite
Pathway:	Metabolic Enzyme/Protease
Storage:	Please store the product under the recommended conditions in the Certificate of Analysis.



BIOLOGICAL ACTIVITY

Description

Cellohexaose is a glucose polymer with two or more glucose monomers produced from the breakdown of cellulose, consisting of a condensation of beta (1-4) linked D-glucose monomers^[1].

REFERENCES

[1]. Benjamin Bonhage, et al. Kinetics of the Enzymatic Cellulose Hydrolysis by the Endoglucanase from the Extremophile *S. solfataricus*. Computer Aided Chemical Engineering, Elsevier, Volume 32,2013,Pages 85-90

Caution: Product has not been fully validated for medical applications. For research use only.

Tel: 609-228-6898

Fax: 609-228-5909

E-mail: tech@MedChemExpress.com

Address: 1 Deer Park Dr, Suite Q, Monmouth Junction, NJ 08852, USA