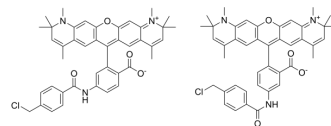


CellTracker Red CMTPX

Cat. No.:	HY-D1727
Molecular Formula:	C ₄₂ H ₄₀ ClN ₃ O ₄
Molecular Weight:	686.24
Target:	Fluorescent Dye
Pathway:	Others
Storage:	-20°C, protect from light * In solvent : -80°C, 6 months; -20°C, 1 month (protect from light)



SOLVENT & SOLUBILITY

In Vitro

DMSO : 3.4312 mg/mL (5.00 mM; Need ultrasonic and warming)

Solvent	Mass	Concentration		
		1 mg	5 mg	10 mg
Preparing Stock Solutions	1 mM	1.4572 mL	7.2861 mL	14.5722 mL
	5 mM	0.2914 mL	1.4572 mL	2.9144 mL
	10 mM	---	---	---

Please refer to the solubility information to select the appropriate solvent.

BIOLOGICAL ACTIVITY

Description

CellTracker Red CMTPX is a cell-permeable fluorescent dye that can be used as a cell tracer for monitoring cell movement and location (Ex/Em=586/614 nm)^[1].

In Vitro

Guidelines (Following is our recommended protocol. This protocol only provides a guideline, and should be modified according to your specific needs).

Fixation and staining of self-assembled spheroids^[1]:

1. Resuspended cells are stained with CellTracker Red CMTPX and allowed to self-assemble into spheroids before aggregation.
2. Cell aggregates are fixed in 4% paraformaldehyde/PBS for 30 min with gentle inversion, then washing cells in PBS for 3 times and stained with 100 ng/mL Hoechst dye overnight prior to imaging.

MCE has not independently confirmed the accuracy of these methods. They are for reference only.

REFERENCES

- [1]. Van Pel DM, et al. Modelling glioma invasion using 3D bioprinting and scaffold-free 3D culture. J Cell Commun Signal. 2018 Dec;12(4):723-730.

Caution: Product has not been fully validated for medical applications. For research use only.

Tel: 609-228-6898

Fax: 609-228-5909

E-mail: tech@MedChemExpress.com

Address: 1 Deer Park Dr, Suite Q, Monmouth Junction, NJ 08852, USA