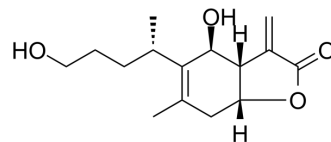


## Britannilactone

|                    |  |
|--------------------|--|
| Cat. No.:          | HY-N0895   |
| CAS No.:           | 33620-72-3   |
| Molecular Formula: | C <sub>15</sub> H <sub>22</sub> O <sub>4</sub>   |
| Molecular Weight:  | 266.33   |
| Target:            | Others   |
| Pathway:           | Others   |
| Storage:           | 4°C, protect from light<br>* In solvent : -80°C, 6 months; -20°C, 1 month (protect from light) |



### SOLVENT & SOLUBILITY

#### In Vitro

DMSO : 5 mg/mL (18.77 mM; Need ultrasonic)

| Preparing Stock Solutions | Solvent       |  | Mass      |            |            |
|---------------------------|---------------|--|-----------|------------|------------|
|                           | Concentration |  | 1 mg      | 5 mg       | 10 mg      |
|                           | 1 mM          |  | 3.7547 mL | 18.7737 mL | 37.5474 mL |
|                           | 5 mM          |  | 0.7509 mL | 3.7547 mL  | 7.5095 mL  |
|                           | 10 mM         |  | 0.3755 mL | 1.8774 mL  | 3.7547 mL  |

Please refer to the solubility information to select the appropriate solvent.

### BIOLOGICAL ACTIVITY

#### Description

Britannilactone(Desacetylinulicin) is a methanol extract of the dried flower of *Inula britannica* L. IC<sub>50</sub> value: Target: A bioassay-guided isolation of the chloroform fraction of the *I. britannica* using an in vitro melanogenesis inhibition assay led to the isolation of sesquiterpenes, 1-O-acetylbritannilactone (1), britannilactone (2) and neobritannilactone B (3). Compounds 1 and 2 significantly reduced melanin production in a dose-dependent manner with IC<sub>50</sub> values of 13.3 and 15.5 μM, respectively [1].

### REFERENCES

[1]. Choo SJ, et al. Hypo-pigmenting effect of sesquiterpenes from *Inula britannica* in B16 melanoma cells. *Arch Pharm Res.* 2014 May;37(5):567-74.

---

**Caution: Product has not been fully validated for medical applications. For research use only.**

Tel: 609-228-6898

Fax: 609-228-5909

E-mail: [tech@MedChemExpress.com](mailto:tech@MedChemExpress.com)

Address: 1 Deer Park Dr, Suite Q, Monmouth Junction, NJ 08852, USA