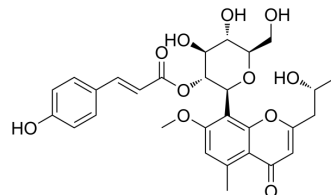


Aloeresin D

Cat. No.:	HY-N2215
CAS No.:	105317-67-7
Molecular Formula:	C ₂₉ H ₃₂ O ₁₁
Molecular Weight:	556.56
Target:	Beta-secretase
Pathway:	Neuronal Signaling
Storage:	4°C, sealed storage, away from moisture and light * In solvent : -80°C, 6 months; -20°C, 1 month (sealed storage, away from moisture and light)



SOLVENT & SOLUBILITY

In Vitro	DMSO : 250 mg/mL (449.19 mM; ultrasonic and warming and heat to 60°C)					
	Preparing Stock Solutions	Solvent	Mass	1 mg	5 mg	10 mg
		Concentration				
		1 mM		1.7968 mL	8.9838 mL	17.9675 mL
		5 mM		0.3594 mL	1.7968 mL	3.5935 mL
	10 mM		0.1797 mL	0.8984 mL	1.7968 mL	
Please refer to the solubility information to select the appropriate solvent.						
In Vivo	1. Add each solvent one by one: 10% DMSO >> 40% PEG300 >> 5% Tween-80 >> 45% saline Solubility: ≥ 2.08 mg/mL (3.74 mM); Clear solution					
	2. Add each solvent one by one: 10% DMSO >> 90% (20% SBE-β-CD in saline) Solubility: ≥ 2.08 mg/mL (3.74 mM); Clear solution					
	3. Add each solvent one by one: 10% DMSO >> 90% corn oil Solubility: ≥ 2.08 mg/mL (3.74 mM); Clear solution					

BIOLOGICAL ACTIVITY

Description	Aloeresin D is a chromone glycoside isolated from Aloe vera, inhibits β-Secretase (BACE1) activity, with an IC ₅₀ of 39 μM ^[1] .
IC₅₀ & Target	BACE1

REFERENCES

Caution: Product has not been fully validated for medical applications. For research use only.

Tel: 609-228-6898

Fax: 609-228-5909

E-mail: tech@MedChemExpress.com

Address: 1 Deer Park Dr, Suite Q, Monmouth Junction, NJ 08852, USA