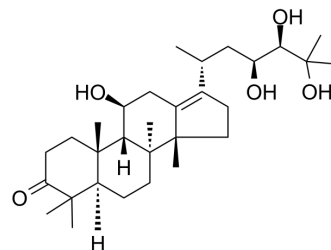


## Alisol A

<b>Cat. No.:</b>	HY-N0853		
<b>CAS No.:</b>	19885-10-0		
<b>Molecular Formula:</b>	C <sub>30</sub> H <sub>50</sub> O <sub>5</sub>		
<b>Molecular Weight:</b>	490.72		
<b>Target:</b>	Autophagy		
<b>Pathway:</b>	Autophagy		
<b>Storage:</b>	Powder	-20°C	3 years
		4°C	2 years
	In solvent	-80°C	2 years
		-20°C	1 year



### SOLVENT & SOLUBILITY

#### In Vitro

DMSO : 100 mg/mL (203.78 mM; Need ultrasonic)

Concentration	Solvent	Mass		
		1 mg	5 mg	10 mg
Preparing Stock Solutions	1 mM	2.0378 mL	10.1891 mL	20.3782 mL
	5 mM	0.4076 mL	2.0378 mL	4.0756 mL
	10 mM	0.2038 mL	1.0189 mL	2.0378 mL

Please refer to the solubility information to select the appropriate solvent.

#### In Vivo

- Add each solvent one by one: 10% DMSO >> 40% PEG300 >> 5% Tween-80 >> 45% saline  
Solubility: ≥ 2.5 mg/mL (5.09 mM); Clear solution
- Add each solvent one by one: 10% DMSO >> 90% (20% SBE-β-CD in saline)  
Solubility: ≥ 2.5 mg/mL (5.09 mM); Clear solution
- Add each solvent one by one: 10% DMSO >> 90% corn oil  
Solubility: ≥ 2.5 mg/mL (5.09 mM); Clear solution

### BIOLOGICAL ACTIVITY

#### Description

Alisol A is a natural product.

### CUSTOMER VALIDATION

- Molecules. 2019 Oct 10;24(20):3651.

- Nephrology. 2023 Nov 27.
- Research Square Preprint. 2021 Feb.

See more customer validations on [www.MedChemExpress.com](http://www.MedChemExpress.com)

## REFERENCES

---

[1]. Yu Y, et al. In vitro metabolism of alisol A and its metabolites' identification using high-performance liquid chromatography-mass spectrometry. *J Chromatogr B Analyt Technol Biomed Life Sci.* 2013 Dec 15;941:31-7.

[2]. Yu Y, et al. A sensitive liquid chromatography-mass spectrometry method for simultaneous determination of alisol A and alisol A 24-acetate from *Alisma orientale* (Sam.) Juz. in rat plasma. *Anal Bioanal Chem.* 2011 Jan;399(3):1363-9

---

**Caution: Product has not been fully validated for medical applications. For research use only.**

Tel: 609-228-6898

Fax: 609-228-5909

E-mail: [tech@MedChemExpress.com](mailto:tech@MedChemExpress.com)

Address: 1 Deer Park Dr, Suite Q, Monmouth Junction, NJ 08852, USA