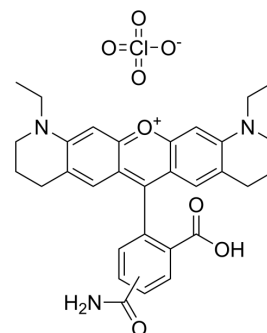


## ATTO 565 amine

Cat. No.:	HY-D2005
Molecular Formula:	C <sub>31</sub> H <sub>32</sub> ClN <sub>3</sub> O <sub>8</sub>
Molecular Weight:	610.05
Target:	Fluorescent Dye
Pathway:	Others
Storage:	Please store the product under the recommended conditions in the Certificate of Analysis.



### BIOLOGICAL ACTIVITY

#### Description

ATTO 565 amine is an amine derivative of ATTO 565, the maximum excitation/emission wavelength: 564/590 nm.

**Caution: Product has not been fully validated for medical applications. For research use only.**

Tel: 609-228-6898

Fax: 609-228-5909

E-mail: [tech@MedChemExpress.com](mailto:tech@MedChemExpress.com)

Address: 1 Deer Park Dr, Suite Q, Monmouth Junction, NJ 08852, USA