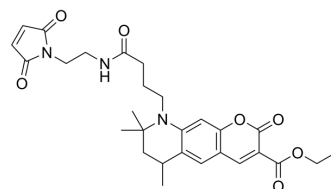


ATTO 425 maleimide

Cat. No.:	HY-D1925
CAS No.:	892156-52-4
Molecular Formula:	C ₂₈ H ₃₃ N ₃ O ₇
Molecular Weight:	523.58
Target:	Fluorescent Dye
Pathway:	Others
Storage:	Please store the product under the recommended conditions in the Certificate of Analysis.



BIOLOGICAL ACTIVITY

Description

ATTO 425 Maleimide is a maleimide ester derivative of ATTO 425, which can be used to label proteins or antibodies. The maximum excitation emission wavelength: 439/489 nm.

Caution: Product has not been fully validated for medical applications. For research use only.

Tel: 609-228-6898

Fax: 609-228-5909

E-mail: tech@MedChemExpress.com

Address: 1 Deer Park Dr, Suite Q, Monmouth Junction, NJ 08852, USA