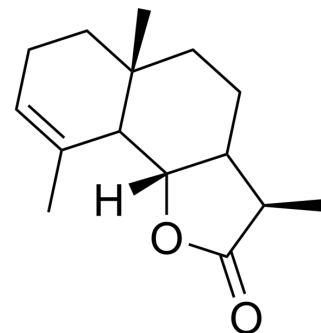


## AChe-IN-46

Cat. No.:	HY-N12388
Molecular Formula:	C <sub>15</sub> H <sub>22</sub> O <sub>2</sub>
Molecular Weight:	234.33
Target:	Cholinesterase (ChE)
Pathway:	Neuronal Signaling
Storage:	Please store the product under the recommended conditions in the Certificate of Analysis.



### BIOLOGICAL ACTIVITY

Description	ACHe-IN-46 (compound 4), a $\beta$ -cyclocostunolide, is an AChE inhibitor <sup>[1]</sup> .
IC <sub>50</sub> & Target	ACHe

### REFERENCES

[1]. Jia Liu, et al. Ruptured organosilica nanocapsules immobilized acetylcholinesterase coupled with MnO<sub>2</sub> nanozyme for screening inhibitors from *Inula macrophylla*. *Nanoscale*. 2023 Oct 20.

**Caution: Product has not been fully validated for medical applications. For research use only.**

Tel: 609-228-6898

Fax: 609-228-5909

E-mail: tech@MedChemExpress.com

Address: 1 Deer Park Dr, Suite Q, Monmouth Junction, NJ 08852, USA