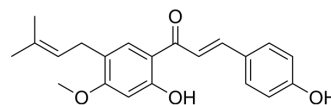


## 4'-O-Methylbavachalcone

Cat. No.:	HY-N1910
CAS No.:	20784-60-5
Molecular Formula:	C <sub>21</sub> H <sub>22</sub> O <sub>4</sub>
Molecular Weight:	338.4
Target:	SARS-CoV
Pathway:	Anti-infection
Storage:	4°C, protect from light * In solvent : -80°C, 6 months; -20°C, 1 month (protect from light)



### SOLVENT & SOLUBILITY

In Vitro	DMSO : 50 mg/mL (147.75 mM; Need ultrasonic)				
		Solvent Concentration	Mass		
	Preparing Stock Solutions		1 mg	5 mg	10 mg
		1 mM	2.9551 mL	14.7754 mL	29.5508 mL
		5 mM	0.5910 mL	2.9551 mL	5.9102 mL
	10 mM	0.2955 mL	1.4775 mL	2.9551 mL	
Please refer to the solubility information to select the appropriate solvent.					
In Vivo	1. Add each solvent one by one: 10% DMSO >> 90% corn oil Solubility: ≥ 2.5 mg/mL (7.39 mM); Clear solution				
	2. Add each solvent one by one: 10% DMSO >> 40% PEG300 >> 5% Tween-80 >> 45% saline Solubility: ≥ 2.08 mg/mL (6.15 mM); Clear solution				
	3. Add each solvent one by one: 10% DMSO >> 90% (20% SBE-β-CD in saline) Solubility: 2.08 mg/mL (6.15 mM); Suspended solution; Need ultrasonic				

### BIOLOGICAL ACTIVITY

Description	4'-O-Methylbavachalcone is a chalcone isolated from <i>Psoralea corylifolia</i> , inhibits severe acute respiratory syndrome coronavirus (SARS-CoV) papain-like protease (PLpro) activity, with an IC <sub>50</sub> of 10.1 μM <sup>[1]</sup> .
IC <sub>50</sub> & Target	IC <sub>50</sub> : 10.1 μM (PLpro) <sup>[1]</sup>

### CUSTOMER VALIDATION

- 
- Nucleic Acids Res. 2021 Jan 8;49(D1):D1113-D1121.

See more customer validations on [www.MedChemExpress.com](http://www.MedChemExpress.com)

## REFERENCES

---

[1]. 4'-O-Methylbavachalcone, et al. Phenolic phytochemical displaying SARS-CoV papain-like protease inhibition from the seeds of *Psoralea corylifolia*. J Enzyme Inhib Med Chem. 2014 Feb;29(1):59-63.

---

**Caution: Product has not been fully validated for medical applications. For research use only.**

Tel: 609-228-6898

Fax: 609-228-5909

E-mail: [tech@MedChemExpress.com](mailto:tech@MedChemExpress.com)

Address: 1 Deer Park Dr, Suite Q, Monmouth Junction, NJ 08852, USA