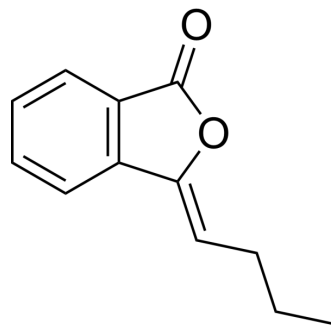


3-Butylidene-phthalide

Cat. No.:	HY-N0336
CAS No.:	551-08-6
Molecular Formula:	C ₁₂ H ₁₂ O ₂
Molecular Weight:	188.22
Target:	Parasite
Pathway:	Anti-infection
Storage:	4°C, sealed storage, away from moisture and light * In solvent : -80°C, 6 months; -20°C, 1 month (sealed storage, away from moisture and light)



SOLVENT & SOLUBILITY

In Vitro	DMSO : 250 mg/mL (1328.23 mM; Need ultrasonic)					
		Solvent Concentration	Mass			
	Preparing Stock Solutions			1 mg	5 mg	10 mg
		1 mM		5.3129 mL	26.5647 mL	53.1293 mL
		5 mM		1.0626 mL	5.3129 mL	10.6259 mL
	10 mM		0.5313 mL	2.6565 mL	5.3129 mL	
Please refer to the solubility information to select the appropriate solvent.						
In Vivo	1. Add each solvent one by one: 10% DMSO >> 40% PEG300 >> 5% Tween-80 >> 45% saline Solubility: ≥ 2.08 mg/mL (11.05 mM); Clear solution					
	2. Add each solvent one by one: 10% DMSO >> 90% (20% SBE-β-CD in saline) Solubility: ≥ 2.08 mg/mL (11.05 mM); Clear solution					
	3. Add each solvent one by one: 10% DMSO >> 90% corn oil Solubility: ≥ 2.08 mg/mL (11.05 mM); Clear solution					

BIOLOGICAL ACTIVITY

Description	3-Butylidene-phthalide (Butylidene-phthalide) is a phthalic anhydride derivative identified in Ligusticum chuanxiong Hort, and has larvicidal activity (LC ₅₀ of 1.56 mg/g for Spodoptera litura larvae) ^[1] .
In Vitro	3-Butylidene-phthalide (Butylidene-phthalide) abrogates the myofibroblasts activation and mesenchymal transdifferentiation in oral submucous fibrosis ^[2] . MCE has not independently confirmed the accuracy of these methods. They are for reference only.

CUSTOMER VALIDATION

- Biomed Pharmacother. 2023 May 18;164:114902.

See more customer validations on www.MedChemExpress.com

REFERENCES

[1]. Yi Y, et al. Z-Ligustilide Exerted Hormetic Effect on Growth and Detoxification Enzymes of Spodoptera litura Larvae. Evid Based Complement Alternat Med. 2018 Jul 2;2018:7104513.

Caution: Product has not been fully validated for medical applications. For research use only.

Tel: 609-228-6898

Fax: 609-228-5909

E-mail: tech@MedChemExpress.com

Address: 1 Deer Park Dr, Suite Q, Monmouth Junction, NJ 08852, USA