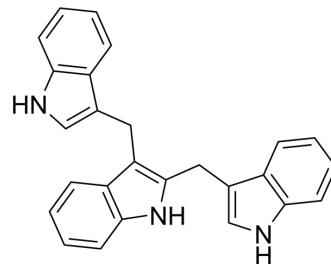


## 2,3-Bis(3-indolylmethyl)indole

Cat. No.:	HY-N10117
CAS No.:	138250-72-3
Molecular Formula:	C <sub>26</sub> H <sub>21</sub> N <sub>3</sub>
Molecular Weight:	375.47
Target:	RANKL/RANK
Pathway:	NF-κB
Storage:	4°C, protect from light * In solvent : -80°C, 6 months; -20°C, 1 month (protect from light)



### SOLVENT & SOLUBILITY

In Vitro	DMSO : 100 mg/mL (266.33 mM; Need ultrasonic)																													
	Preparing Stock Solutions	<table border="1"> <thead> <tr> <th>Solvent</th> <th>Mass</th> <th>1 mg</th> <th>5 mg</th> <th>10 mg</th> </tr> </thead> <tbody> <tr> <td>Concentration</td> <td></td> <td></td> <td></td> <td></td> </tr> <tr> <td>1 mM</td> <td></td> <td>2.6633 mL</td> <td>13.3166 mL</td> <td>26.6333 mL</td> </tr> <tr> <td>5 mM</td> <td></td> <td>0.5327 mL</td> <td>2.6633 mL</td> <td>5.3267 mL</td> </tr> <tr> <td>10 mM</td> <td></td> <td>0.2663 mL</td> <td>1.3317 mL</td> <td>2.6633 mL</td> </tr> </tbody> </table>	Solvent	Mass	1 mg	5 mg	10 mg	Concentration					1 mM		2.6633 mL	13.3166 mL	26.6333 mL	5 mM		0.5327 mL	2.6633 mL	5.3267 mL	10 mM		0.2663 mL	1.3317 mL	2.6633 mL			
		Solvent	Mass	1 mg	5 mg	10 mg																								
		Concentration																												
		1 mM		2.6633 mL	13.3166 mL	26.6333 mL																								
5 mM		0.5327 mL	2.6633 mL	5.3267 mL																										
10 mM		0.2663 mL	1.3317 mL	2.6633 mL																										
Please refer to the solubility information to select the appropriate solvent.																														
In Vivo	1. Add each solvent one by one: 10% DMSO >> 40% PEG300 >> 5% Tween-80 >> 45% saline Solubility: ≥ 2.5 mg/mL (6.66 mM); Clear solution																													

### BIOLOGICAL ACTIVITY

Description	2,3-Bis(3-indolylmethyl)indole significantly suppresses RANKL-induced osteoclast formation, actin ring formation, and bone resorption in a concentration-dependent manner.
-------------	--

### REFERENCES

[1]. Ha MT, et al. Anti-osteoclastogenic Effects of Indole Alkaloids Isolated from Barley (*Hordeum vulgare* Var. *Hexastichon*) Grass. *J Agric Food Chem.* 2021 Nov 10;69(44):12994-13005.

---

**Caution: Product has not been fully validated for medical applications. For research use only.**

Tel: 609-228-6898

Fax: 609-228-5909

E-mail: [tech@MedChemExpress.com](mailto:tech@MedChemExpress.com)

Address: 1 Deer Park Dr, Suite Q, Monmouth Junction, NJ 08852, USA